



55 Greenfarm Road, Newton Mearns

[www.nicolestateagents.co.uk](http://www.nicolestateagents.co.uk)



Nicol Estate Agents



## Nicol Estate Agents

### Situation

A hugely popular suburb, Newton Mearns is a welcoming, family friendly town, with a fantastic, lively and inclusive community. If you choose to live in Newton Mearns, you will have access to some of Scotland's highest attaining primary and secondary schools, including Eastwood High and St. Ninian's High Schools.

Newton Mearns is located approximately 9 miles from Glasgow City Centre. Commuter routes are served by the M77, M8 and Glasgow Southern Orbital motorways which also provide 30 minute journey times to both Glasgow and Prestwick International Airports. There are regular train and bus services to Glasgow, East Kilbride and the beautiful Ayrshire coast.

Recognised as providing amongst the highest standards of local amenities, Newton Mearns offers an array of healthcare centres, banks and libraries and a broad range of supermarkets, boutique shops and restaurants, including The Avenue Shopping Centre. Only a short distance away is the Greenlaw Retail Park which includes Waitrose, Tesco Metro, Aldi and a wide range of bars and restaurants. Silverburn shopping centre is only a short drive from the property.

Local sports and recreational facilities include David Lloyd's, Parklands Country Club, Williamwood and Whitecraigs Golf Clubs, several private bowling clubs and Whitecraigs tennis and rugby club, as well as East Renfrewshire Council's own excellent sports and leisure facilities at Eastwood Toll.









## Description

A well presented two bedroom end terrace villa, conveniently located for local amenities, transport links and popular East Renfrewshire schools.

The accommodation is formed over two levels and comprises:

Ground Floor: Entrance hallway, Well presented sitting room. Well appointed kitchen with a full complement of floor and wall mounted cabinets and complementary worktop surfaces.

First Floor: Two bedrooms, both with fitted wardrobes. Attractive house bathroom with shower over bath.

The property is further complemented by gas central heating, double glazing, well kept private gardens and resident parking.



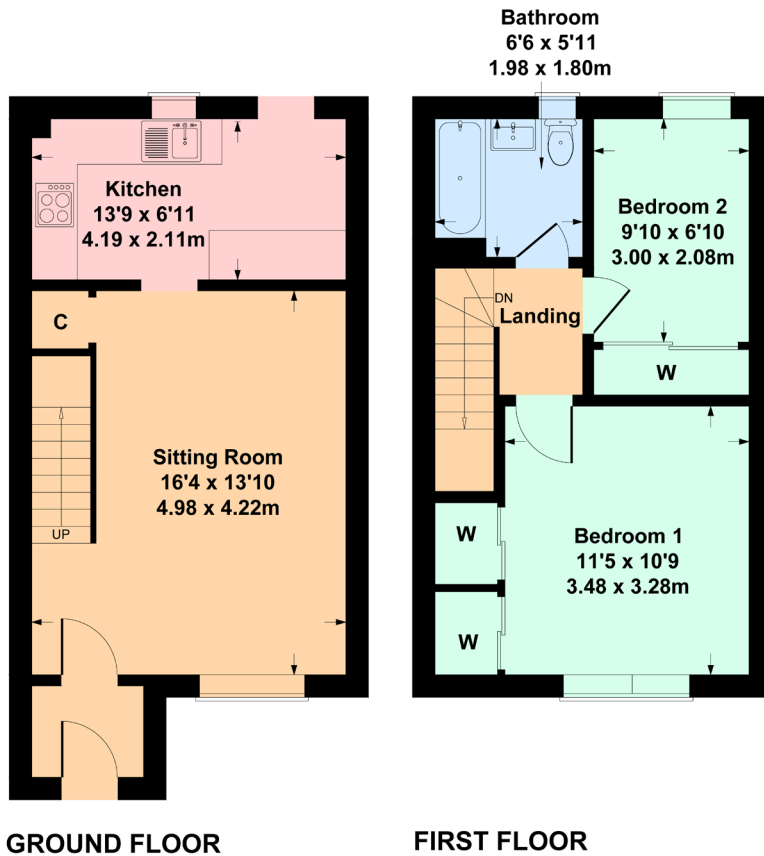


Nicol Estate Agents



## 55 Greenfarm Road, Newton Mearns G77 6RH

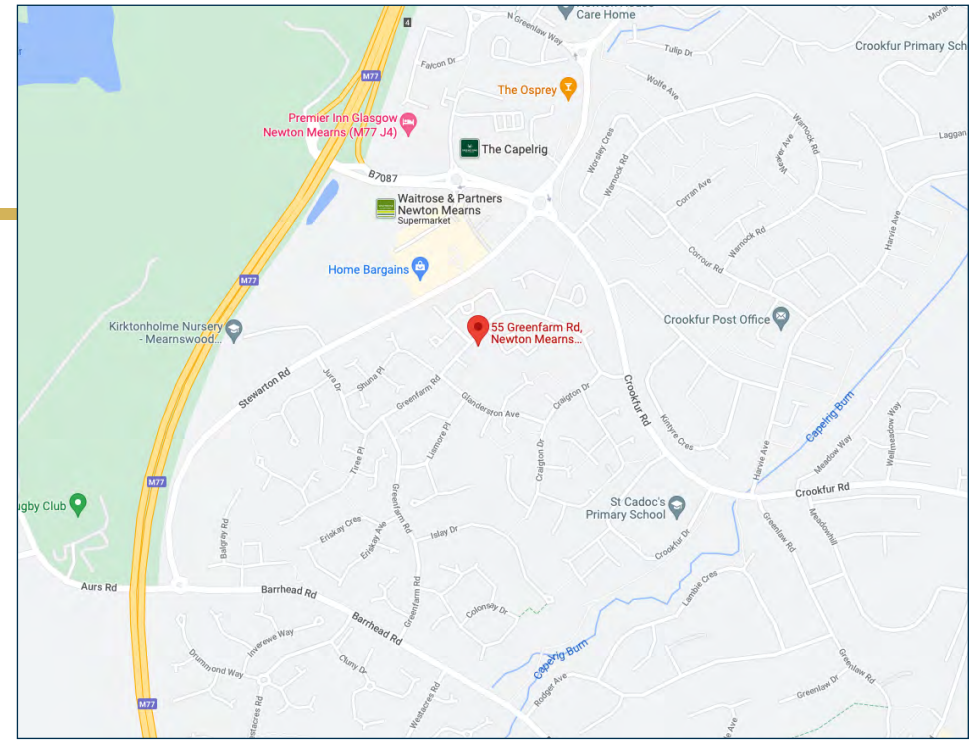
Approximate gross internal area 700 sq ft - 65 sq m



SKETCH PLAN FOR ILLUSTRATIVE PURPOSES ONLY

All measurements, walls, doors, windows, fitting and appliances, their sizes and locations are approximate only. They cannot be regarded as being a representation by the seller, nor their agent, produced by Potterplans Ltd. 2022

We believe these details to be accurate however it is not guaranteed and they do not form any part of a contract. Fixtures and fittings are not included unless specified in the enclosed. Photographs are for general information and it must not be inferred that any item is included for sale with the property. All distances and measurements are approximate. Floorplans may not be to scale and are for illustration purposes only.



### Viewing

By appointment through  
Nicol Estate Agents  
46 Ayr Road  
Newton Mearns, Glasgow G46 6SA  
Telephone 0141 616 3960  
mail@nicolestateagents.co.uk

### Outgoings

East Renfrewshire Council.  
Band D

### Fixtures and Fittings

Only items specifically mentioned in the sale particulars are included in the sale price.

### Energy Efficiency Rating

Band C

### Services

The property will be supplied by mains water, gas and electricity. Gas central heating.

### Local Authority

East Renfrewshire Council  
Council headquarters  
Eastwood Park, Rouken Glen Road  
Giffnock G46 6UG  
Tel: (0141) 577 3000

Property Reference 2100

46 Ayr Road, Newton Mearns, Glasgow G46 6SA

T: 0141 616 3960 F: 0141 258 2761 E: mail@nicolestateagents.co.uk

www.nicolestateagents.co.uk

