



21 Worsley Crescent, Newton Mearns

www.nicolestateagents.co.uk



Nicol Estate Agents



Nicol Estate Agents

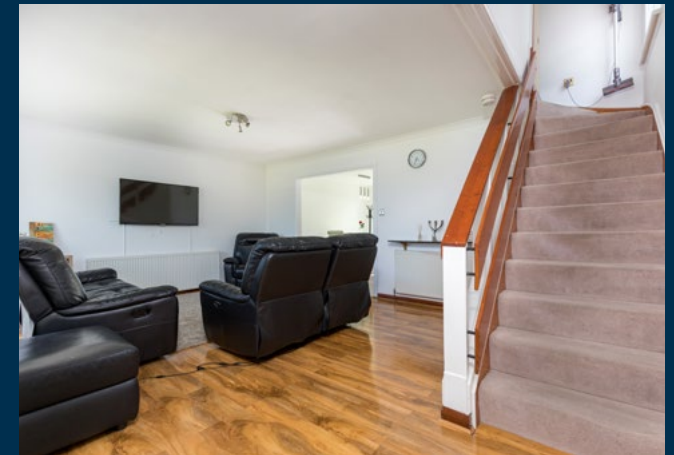
Situation

Newton Mearns is located approximately 9 miles from Glasgow City Centre. Commuter routes are served by the M77, M8 and Glasgow Orbital motorways which also provide 30 minute journey times to both Glasgow and Prestwick international airports. There are regular train and bus services to Glasgow, East Kilbride and the beautiful Ayrshire coast. Patterton Train Station is a short distance away.

Recognised as providing amongst the highest standards of local amenities, Newton Mearns offers an array of healthcare centres, banks and libraries and a broad range of supermarkets, boutique shops and restaurants, including The Avenue Shopping Centre. Also, close by, is the Greenlaw Retail Park which includes Waitrose, Tesco Metro, Aldi and a range of bars and restaurants. Silverburn shopping centre is only a short drive from the property.

A hugely popular suburb, Newton Mearns is a welcoming, family friendly town, with a fantastic, lively and inclusive community. If you choose to live in Newton Mearns, you will have access to some of Scotland's highest attaining primary and secondary schools, including Eastwood High and St. Ninian's High Schools.

Local sports and recreational facilities include David Lloyd's, Parklands Country Club, Williamwood and Whitecraigs Golf Clubs, several private bowling clubs and Whitecraigs tennis and rugby club, as well as East Renfrewshire Council's own excellent sports and leisure facilities at Eastwood Toll. If you are an outdoors lover, Rouken Glen Park, voted Best Park in the UK 2016, is nearby with walking trails through the woods, a great adventure play area, a skate park, five a side football pitches and a boating pond.









Description

A well presented three bedroom detached villa close to local amenities and transport links.

The property has been well maintained by the present owners, and comprises:

Ground Floor: Reception hallway with Guest WC. Generous sitting room with large window, looking onto the front garden. Dining room, which is on an open plan arrangement to breakfasting kitchen and also affords access the conservatory. A well-appointed, refitted kitchen with a full complement of floor standing and wall mounted cabinets.

First Floor: Bedroom one with fitted wardrobes. Bedroom two. Bedroom three with fitted wardrobes. House bathroom with separate shower enclosure.

The property is further complemented by gas central heating and double glazing. Well-tended gardens, enclosed rear patio, ideal for entertaining. A driveway to the rear provides ample off street parking and leads to a tandem garage.



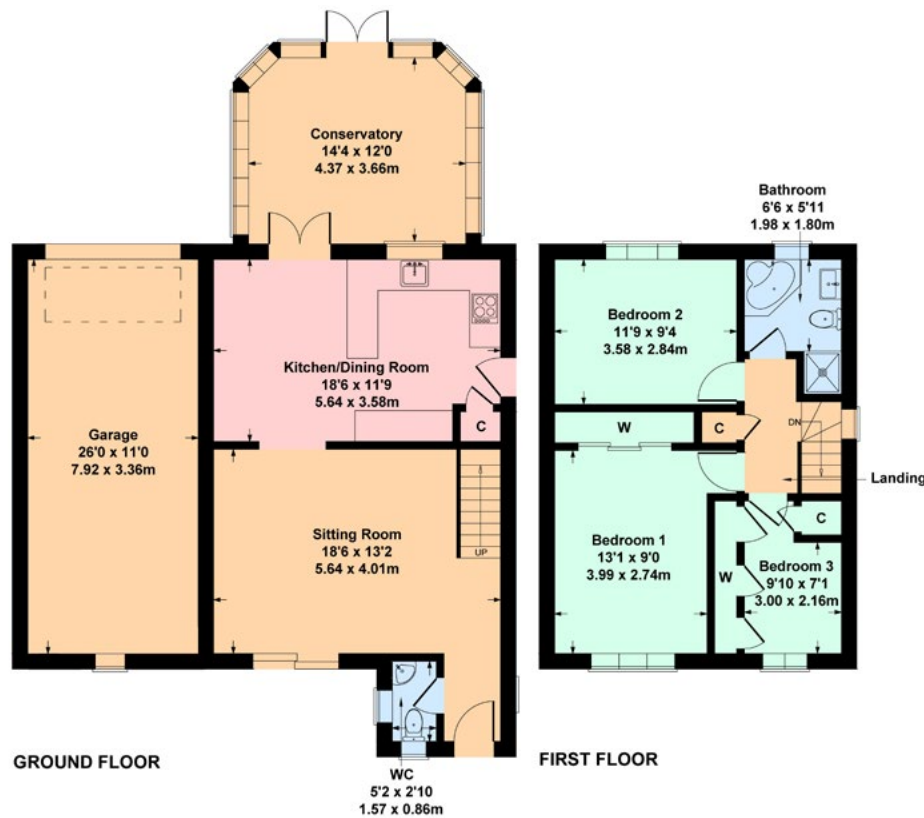


Nicol Estate Agents



21 Worsley Crescent, Newton Mearns G77 6DW

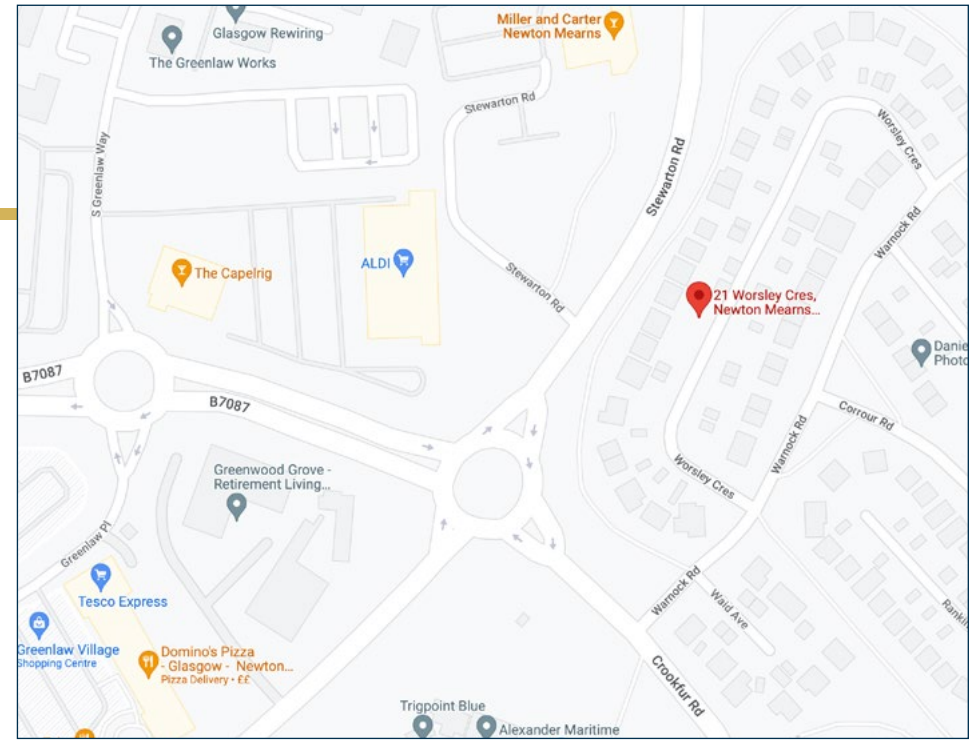
Approximate gross internal area
Main House = 1158 sq ft - 108 sq m
Garage = 280 sq ft - 26 sq m
Total = 1438 sq ft - 134 sq m



SKETCH PLAN FOR ILLUSTRATIVE PURPOSES ONLY

All measurements, walls, doors, windows, fitting and appliances, their sizes and locations are approximate only. They cannot be regarded as being a representation by the seller, nor their agent. produced by Potterplans Ltd. 2022

We believe these details to be accurate however it is not guaranteed and they do not form any part of a contract. Fixtures and fittings are not included unless specified in the enclosed. Photographs are for general information and it must not be inferred that any item is included for sale with the property. All distances and measurements are approximate. Floorplans may not be to scale and are for illustration purposes only.



Viewing

By appointment through
Nicol Estate Agents
46 Ayr Road
Newton Mearns, Glasgow G46 6SA
Telephone 0141 616 3960
mail@nicolestateagents.co.uk

Outgoings

East Renfrewshire Council
Council Tax Band: E

Fixtures and Fittings

Only items specifically mentioned in the sale particulars are included in the sale price.

Energy Efficiency Rating

Band C

Services

The property will be supplied by mains water, electricity, gas and drainage. Gas central heating.

Local Authority

East Renfrewshire Council
Council headquarters
Eastwood Park
Rouken Glen Road
Giffnock
G46 6UG
Tel: (0141) 577 3000

Property Reference 2746

46 Ayr Road, Newton Mearns, Glasgow G46 6SA

T: 0141 616 3960 F: 0141 258 2761 E: mail@nicolestateagents.co.uk

www.nicolestateagents.co.uk

