



6 Pollock Road, Newton Mearns

www.nicolestateagents.co.uk



Nicol Estate Agents



Nicol Estate Agents

Situation

A hugely popular suburb, Newton Mearns is a welcoming, family friendly town, with a fantastic, lively and inclusive community. If you choose to live in Newton Mearns, you will have access to some of Scotland's highest attaining primary and secondary schools, including Eastwood High and St. Ninian's High Schools.

Newton Mearns is located approximately 9 miles from Glasgow City Centre. Commuter routes are served by the M77, M8 and Glasgow Orbital motorways which also provide 30 minute journey times to both Glasgow and Prestwick international airports. There are regular train and bus services to Glasgow, East Kilbride and the beautiful Ayrshire coast.

Recognised as providing amongst the highest standards of local amenities, Newton Mearns offers an array of healthcare centres, banks and libraries and a broad range of supermarkets, boutique shops and restaurants, including The Avenue Shopping Centre. Only a short distance away is the Greenlaw Retail Park which includes Waitrose, Tesco Metro, Aldi and a wide range of bars and restaurants. Silverburn shopping centre is only a short drive from the property.

Local sports and recreational facilities include David Lloyd's, Parklands Country Club, Williamwood and Whitecraigs Golf Clubs, several private bowling clubs and Whitecraigs tennis and rugby club. East Renfrewshire Council's own excellent sports and leisure facilities at Eastwood Toll.









Description

A three bedroom end terraced villa, conveniently located for amenities and schooling in the surrounding area.

The property provides flexible accommodation over two levels and comprises:

Ground Floor: Entrance vestibule. Reception hallway with storage. Well presented sitting room. Extended, dining kitchen with a full complement of floor and wall mounted cabinets and complementary worktop surfaces. House bathroom, with a three piece white suite.

First Floor: Three bedrooms, all of which are of double proportions.

The property is further complemented by gas central heating and double glazing. Ample parking to the front of the property. Gardens to front, side and rear of the property, with a terrace ideal for entertaining.



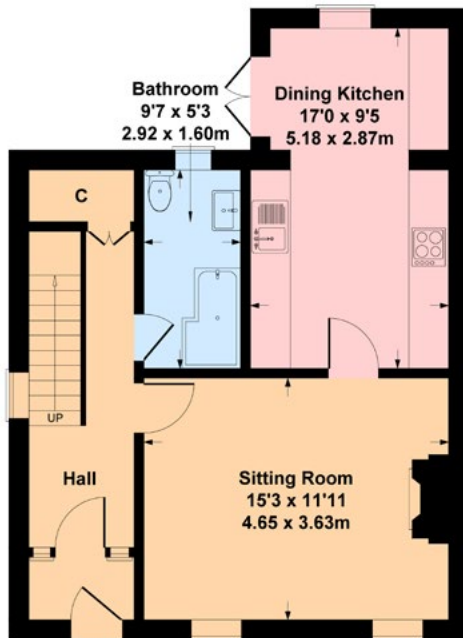
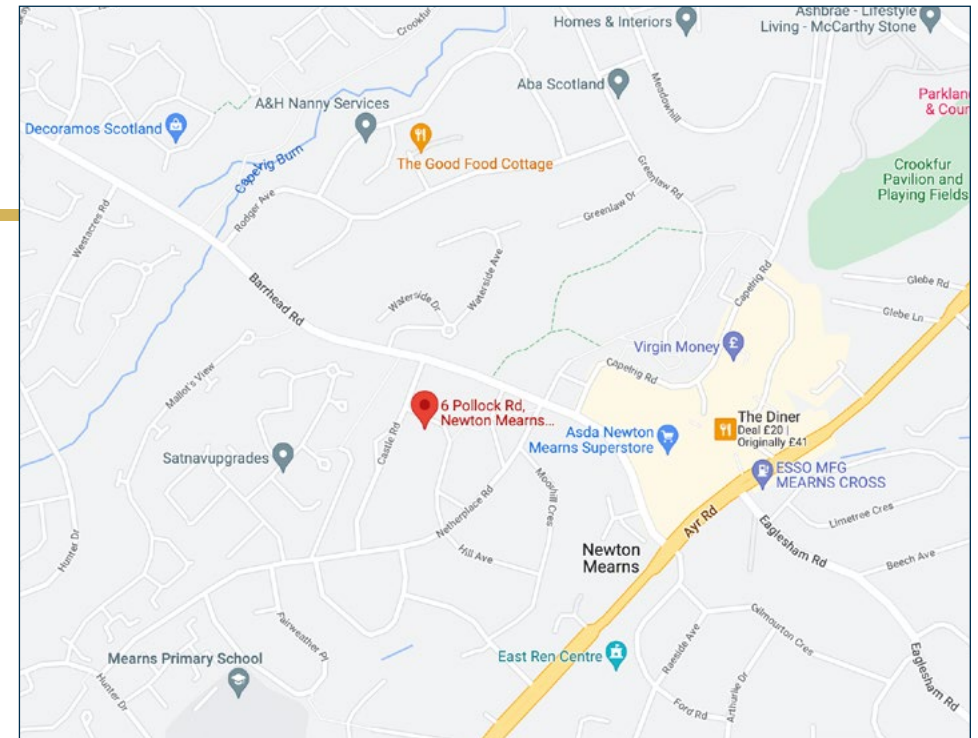


Nicol Estate Agents

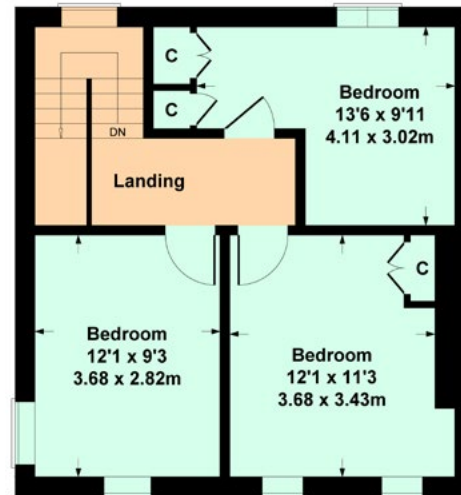


6 Pollock Road, Newton Mearns G77 6DH

Approximate gross internal area 1008 sq ft - 94 sq m



GROUND FLOOR



FIRST FLOOR

SKETCH PLAN FOR ILLUSTRATIVE PURPOSES ONLY

All measurements, walls, doors, windows, fitting and appliances, their sizes and locations are approximate only. They cannot be regarded as being a representation by the seller, nor their agent, produced by Potterplans Ltd. 2022

We believe these details to be accurate however it is not guaranteed and they do not form any part of a contract. Fixtures and fittings are not included unless specified in the enclosed. Photographs are for general information and it must not be inferred that any item is included for sale with the property. All distances and measurements are approximate. Floorplans may not be to scale and are for illustration purposes only.

Viewing

By appointment through
Nicol Estate Agents
46 Ayr Road
Newton Mearns, Glasgow G46 6SA
Telephone 0141 616 3960
mail@nicolestateagents.co.uk

Outgoings

East Renfrewshire Council.
Band B

Fixtures and Fittings

Only items specifically mentioned in the sale particulars are included in the sale price.

Energy Efficiency Rating

Band D

Services

The property will be supplied by mains water, gas and electricity. Gas central heating.

Local Authority

East Renfrewshire Council
Council headquarters
Eastwood Park
Rouken Glen Road
Giffnock
G46 6UG
Tel: (0141) 577 3000

Property Reference 2768

46 Ayr Road, Newton Mearns, Glasgow G46 6SA

T: 0141 616 3960 F: 0141 258 2761 E: mail@nicolestateagents.co.uk

www.nicolestateagents.co.uk

