 O'MALLEY

 O'MALLEY

135 High Street
Tillicoultry, FK13 6DS

omalleyproperty.com
01259212337



Description

Nestled in the heart of Tillicoultry, this charming one-bedroom ground floor flat presents a perfect blend of convenience and comfort, making it an ideal home for individuals or couples seeking a serene lifestyle with the ease of accessibility.

As you step inside, you are greeted by a warm and inviting living space adorned with tasteful decor and abundant natural light filtering through the windows. The kitchen, adjacent to the living room, is modern and well-equipped, boasting ample space for appliances, sleek countertops, and plenty of storage space.

The bedroom, a peaceful retreat from the hustle and bustle of daily life, boasts generous dimensions and is complemented by a large window, ensuring a tranquil and airy ambiance. Ample storage solutions, including a built-in wardrobe, provide plenty of space to organize and store personal belongings, contributing to a clutter-free and harmonious environment.

The contemporary bathroom comprises; free standing shower, sink and W.C.

Externally, there is a communal drying green. On street parking is available.

Additional features of this exceptional property include central heating, double glazing throughout, and a private entrance, ensuring comfort, security, and privacy.



“Spacious Property”

Location

This flat also benefits from a prime location on High Street, placing residents at the heart of Tillicoultry's vibrant community. A stone's throw away from a variety of shops, cafes, and restaurants, the convenience is unparalleled. Outdoor enthusiasts will appreciate the proximity to stunning landscapes and walking trails, offering ample opportunity for recreation and exploration.

Living Room

15'6" x 10'4"

Kitchen

11'10" x 7'7"

Bedroom

13'5" x 9'3"

Bathroom

6'1" x 5'2"

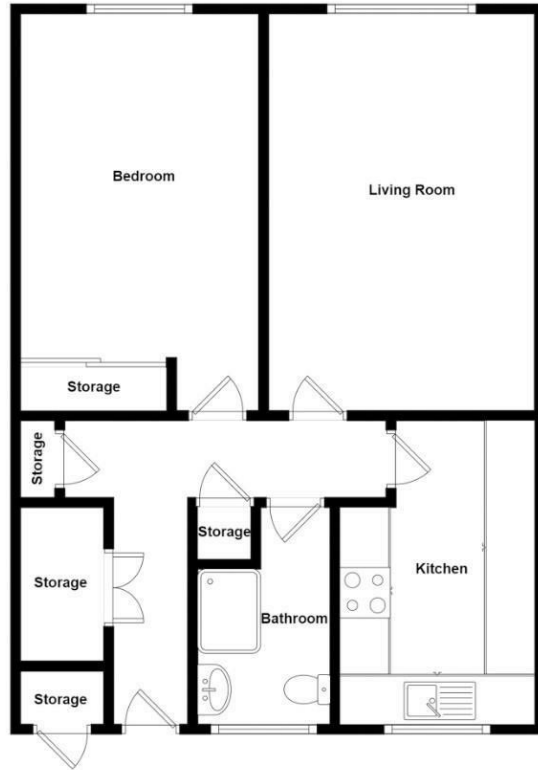
Home Report

The home report is available upon request.



Offers Over £54,995

Viewing 9am - 9pm 7 days a week



Whilst every attempt has been made to ensure the accuracy of the floorplan contained here, measurements of doors, windows, rooms and any other items are approximate and no responsibility is taken for any error, omission or mis-statement. This plan is for illustrative purposes only and should be used as such by any prospective purchaser. The services, systems and appliances shown have not been tested and no guarantee as to their operability or efficiency can be given.

