



O'MALLEY

O'MALLEY

1 Braeside  
, FK10 3DR

omalleyproperty.com  
01259212337





## Description

Welcome to your cosy retreat nestled in the neighbourhood of Braeside, Sauchie. This delightful semi-detached house offers an inviting ambiance and comfortable living spaces, perfect for individuals or small families seeking a peaceful haven.

As you approach the property, you're greeted by a multi-car driveway. Upon entering the house, you'll find yourself in a spacious and welcoming hallway that leads to a generously sized living room. The living room boasts large windows that flood the space with natural light

Adjacent to the living room is the kitchen, which is equipped with modern appliances, ample cupboard space, and a dining area. The kitchen's layout is thoughtfully designed to maximize functionality and ease of use, making meal preparation and family gatherings a delight. A door from the kitchen opens to the rear garden, a private and peaceful outdoor space ideal for al fresco dining, gardening, or simply enjoying the outdoors.

The upper floor houses two well-proportioned bedrooms, each offering comfortable living space and built-in storage to keep the rooms clutter-free. The second bedroom is versatile and can serve as a guest room, study, or child's bedroom, depending on your needs. A family bathroom completes the accommodation, featuring a bath with an overhead shower, washbasin, and WC.



---

**“Spacious Property”**

## Location

This semi-detached house in Braeside, Sauchie, also benefits from off-street parking, double glazing, and gas central heating, adding to the comfort and convenience of this lovely home. Its location offers easy access to local schools, shops, and public transport links, making it an ideal choice for professionals, couples, or small families looking for a peaceful yet connected place to call home.

## Living Room

14'2" x 12'8"

## Kitchen

17'10" x 7'10"

## Bedroom 1

14'3" x 9'6"

## Bedroom 2

11'2" x 10'6"

## Bathroom

6'11" x 5'7"

## Home Report

The home report is available upon request.

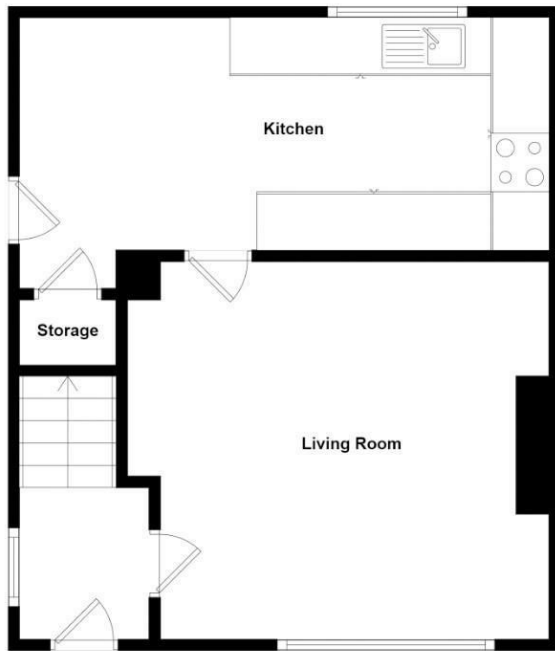


**Offers Over £119,995**

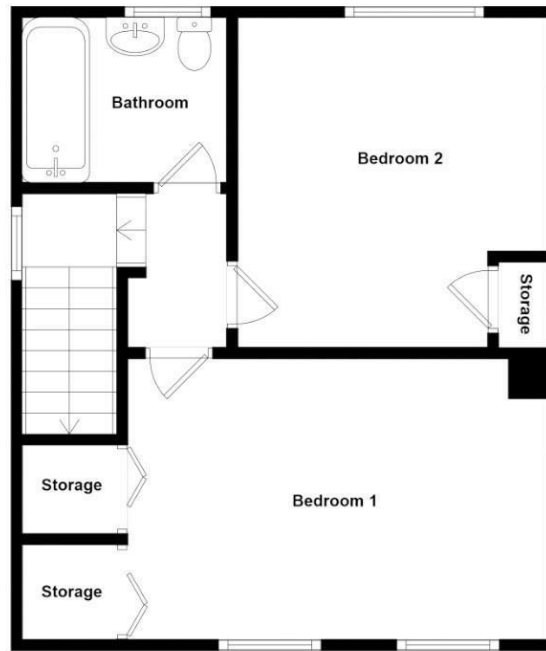
**Viewing 9am - 9pm 7 days a week**



Ground Floor



1st Floor



Whilst every attempt has been made to ensure the accuracy of the floorplan contained here, measurements of doors, windows, rooms and any other items are approximate and no responsibility is taken for any error, omission or mis-statement. This plan is for illustrative purposes only and should be used as such by any prospective purchaser. The services, systems and appliances shown have not been tested and no guarantee as to their operability or efficiency can be given.

