



paulfoxproperties



OFFERS OVER £74,000

CORSEWALL STREET, COATBRIDGE

An excellent opportunity for the first time buyer or buy to let investor to purchase this traditional sandstone one bedroom ground floor flat situated within a much sought after area of Coatbridge.

The accommodation is presented in good condition and consists of entrance hall, lounge, kitchen, bedroom and bathroom.

The property further benefits from gas central heating and double glazing. Communal garden to rear.



Kitchen 17'0" x 4'6"

Entering from hallway into laminate floored kitchen which benefits from thirteen white gloss wall and floor units. Integrated oven and hob. Stainless steel sink and mixer tap. Worktops and tiled splashback. Single radiator. Integrated spot lights. Single window to rear. Three double socket points. Plumbing for washing machine.

Entrance Hall

Access via white UPVC door with frosted glass design into laminate floored entrance hall. Centre ceiling light. One double socket point.

Lounge

16'3" x 13'9"

Enter via four panel white wood door into laminate floored lounge. Bay window to front. Centre ceiling light. One double radiator. One single and one double socket points. Telephone and external aerial points.



Bedroom

16'7" x 10'9"

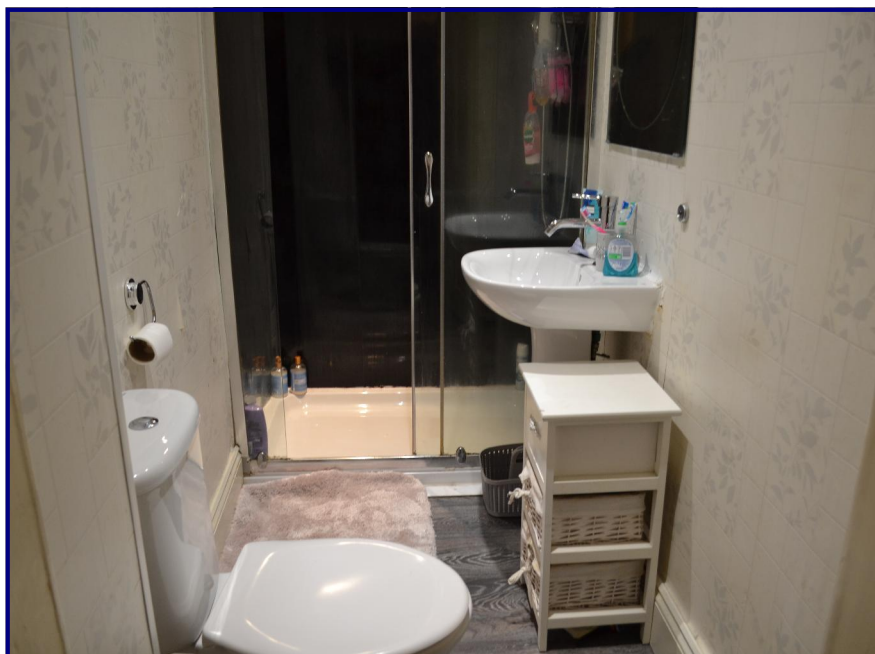
Entering via four panel white wood door into carpet floored bedroom with single window to rear. One single radiator. Centre ceiling light. One double socket point. Large wardrobes.



Bathroom

7'3" x 3'10"

Entering via four panel white wood door into laminate floored bathroom with two piece white bathroom suite with walk in shower cubicle and electric shower. Integrated spotlights.



Gardens

Front garden is laid with artificial grass. Communal garden to rear.

Heating and Glazing

The property benefits from gas central heating and double glazing.

Extras

Included in the sale are all fixtures and fittings.

Council Tax

Band "B"

Offers over £74,000 are invited

HOME REPORT AVAILABLE

Viewing By appointment through Paul Fox Properties

Contact Paul Fox

Ref. No. PFP1531