



438 Cambusnethan Street

Wishaw, ML2 8QA

Fixed asking price £130,000

A deceptively spacious and immaculate end terraced villa situated within Cambusnethan. In lovely decorative order and upkept to the highest of standards throughout, this property offers an excellent, versatile level of family living.

The accommodation is formed over two levels and comprises, on the ground floor, entrance porch, reception hallway, lounge, large fitted kitchen with appliances, double bedroom and bathroom. On the upper level are a further two double bedrooms.

Externally the property benefits from a lovely landscaped rear garden with stunning open views, a sun trapped patio and seating area, long driveway with shared access to the side and paved front providing ample off road car parking.

Furthermore the property has Double Glazing, Gas Central Heating and security alarm system.

Internal viewing is strongly advised to appreciate the quality of accommodation on offer here.

A selection of shops and amenities, where all day-to-day requirements can be catered for, are found in Cambusnethan and nearby Newmains, with Wishaw Town Centre only a few minutes away. Further shops, schooling, recreational pursuits and various public transport links are all to hand. For the commuter the M8 and M74 motorway networks allow for fast and easy access to Glasgow, Edinburgh and all points beyond.

- Beautiful Rear Garden
- Three Double Bedrooms
- Long Driveway
- Ample off road parking
- Spacious Family Home
- Patio and Seating Areas
- Double Glazing
- Gas Central Heating

Viewing

Please contact our Pomphreys Properties Ltd Office on 01698373365 if you wish to arrange a viewing appointment for this property or require further information.



3



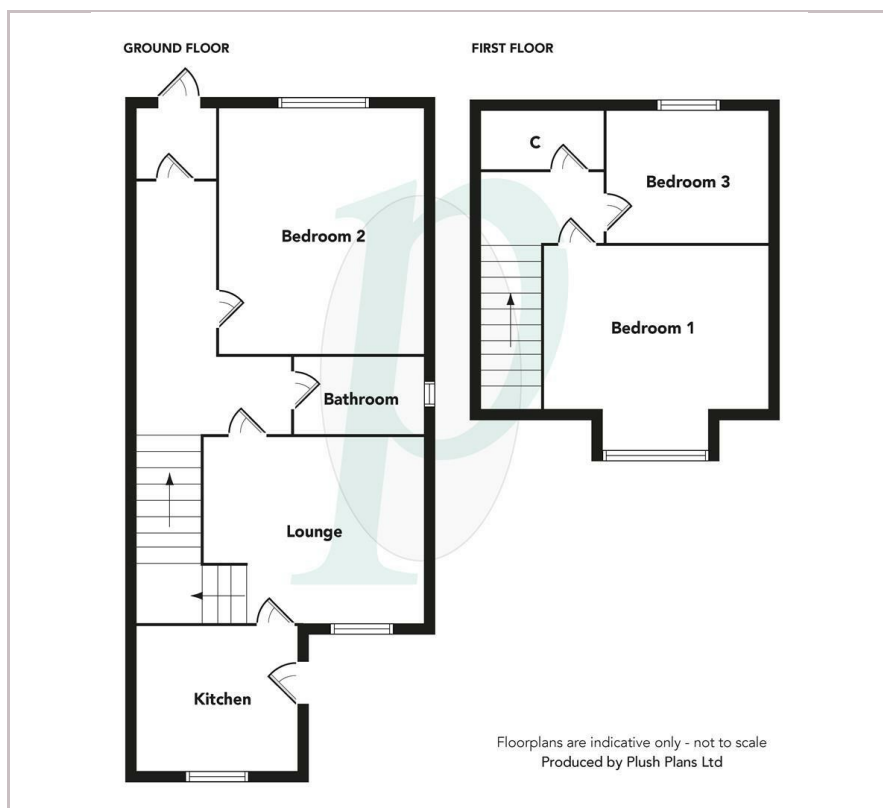
1



1



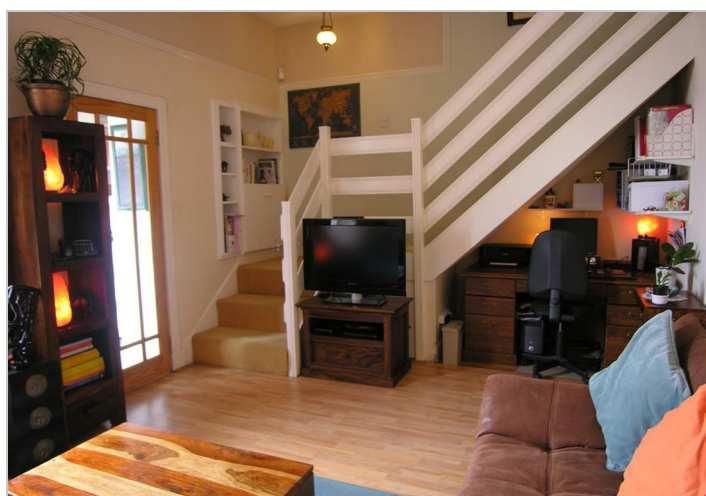
Floor Plan



Area Map



Energy Efficiency Graph



These particulars, whilst believed to be accurate are set out as a general outline only for guidance and do not constitute any part of an offer or contract. Intending purchasers should not rely on them as statements of representation of fact, but must satisfy themselves by inspection or otherwise as to their accuracy. No person in this firm's employment has the authority to make or give any representation or warranty in respect of the property.