



16 Ballater Crescent

, Wishaw, ML2 7YJ

Offers in the region of £120,000

NEW TO THE MARKET

A lovely bright and spacious semi detached villa, recently redecorated throughout and situated within a quiet sought after residential area of Coltness Wishaw.

Early viewing is recommended to appreciate the accommodation on offer here.

Comprising entrance hall, large lounge, extended kitchen diner with patio doors offering access to the rear garden, 2 good sized bedrooms and immaculate modern shower room.

Further benefits include Double Glazing, Electric Heating, landscaped garden grounds to front and rear and a driveway to the side leading to a garage.

Ballater Crescent is a short drive from Wishaw Town Centre with its many amenities and where all day-to-day requirements can be catered for including various public transport links, sports facilities and schooling. For the commuter, the M8 and M74 motorway networks allow for fast and easy access to Glasgow, Edinburgh and all points beyond.

EPC D.

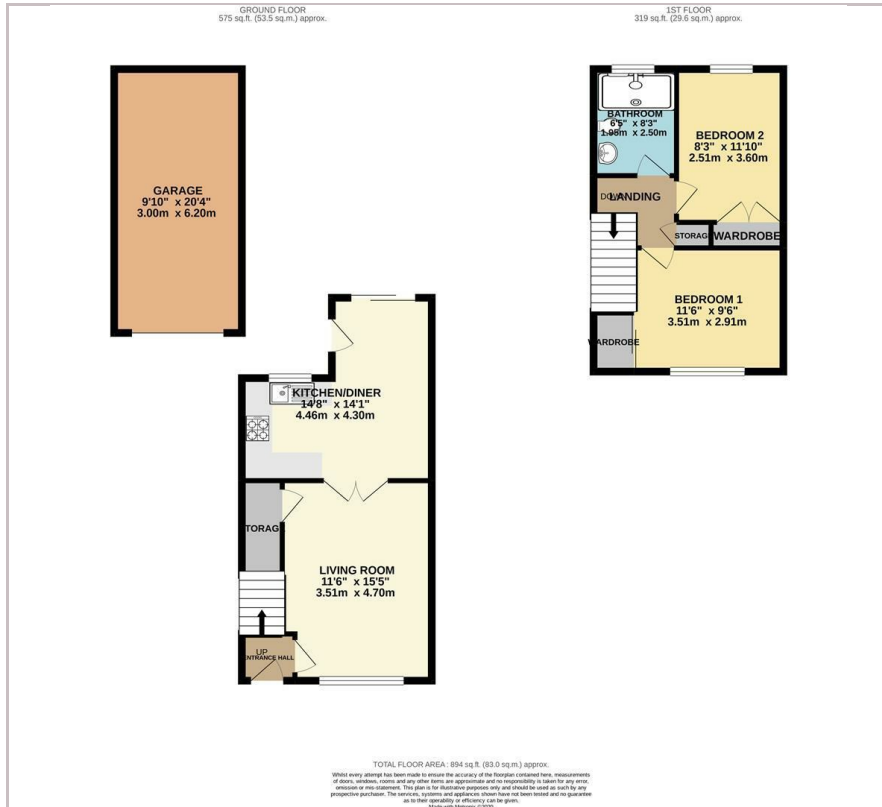
Viewing

Please contact our Pomphreys Properties Ltd Office on 01698373365 if you wish to arrange a viewing appointment for this property or require further information.

- Recently Redecorated throughout
- Modern Large Shower Room
- Two good sized Bedrooms
- Landscaped Rear Garden
- Garage



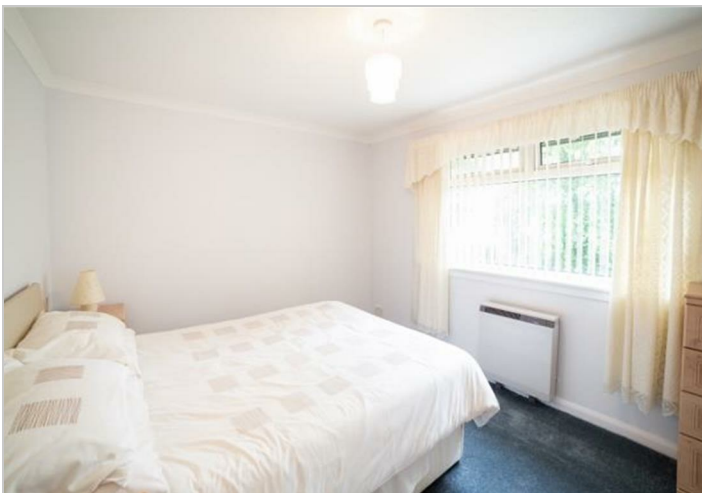
Floor Plan



Area Map



Energy Efficiency Graph



These particulars, whilst believed to be accurate are set out as a general outline only for guidance and do not constitute any part of an offer or contract. Intending purchasers should not rely on them as statements of representation of fact, but must satisfy themselves by inspection or otherwise as to their accuracy. No person in this firm's employment has the authority to make or give any representation or warranty in respect of the property.