



10 Glendorch Avenue

Wishaw ML2 8TB

Offers over £149,000

PRICE CHANGE!!

Rarely available, an outstanding opportunity to purchase a spacious detached villa, situated in an elevated position and set in a highly sought after residential location within Branchalwood Wishaw. Internal viewing is a must to appreciate the size and style of accommodation on offer here.

The substantial accommodation comprises reception hall, large lounge, modern fitted kitchen, dining room, two large double bedrooms and lovely modern shower room.

Further benefits include double glazing, gas central heating, landscaped enclosed mature gardens to front and rear with a long driveway to the side of the property.

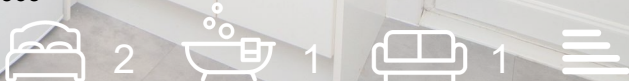
EPC D.

Glendorch Avenue is situated minutes from Wishaw Town Centre where all day-to-day requirements can be catered for including all shopping, schooling and transport links. For the commuter the nearby M74 & M8 motorway networks allow for fast and easy access to Glasgow, Edinburgh and all points beyond.

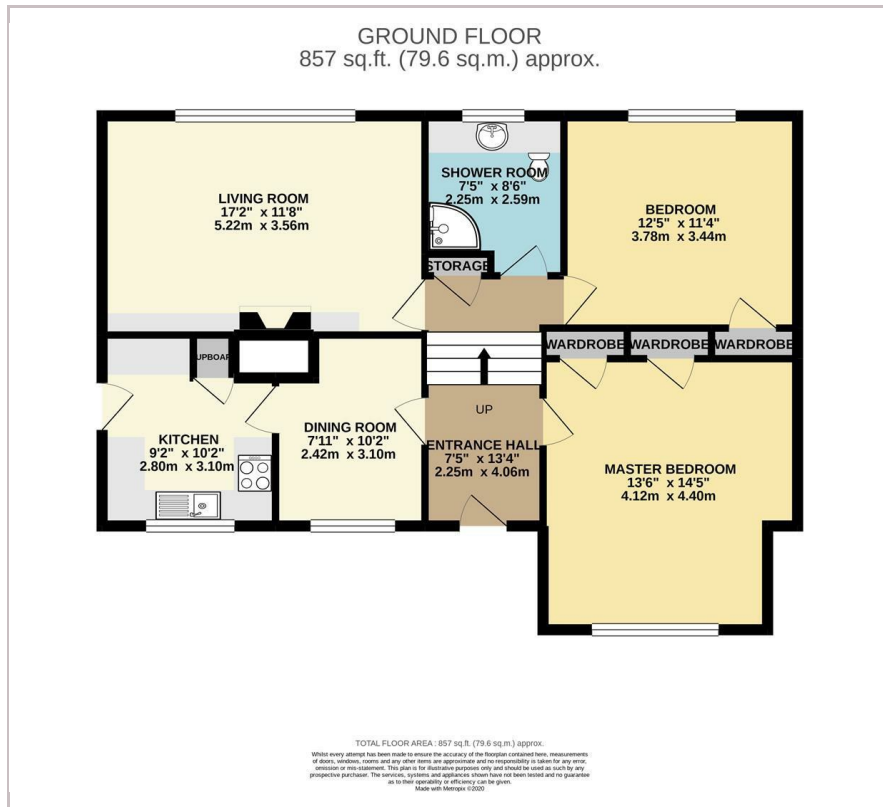
Viewing

Please contact our Pomphreys Properties Ltd Office on 01698373365 if you wish to arrange a viewing appointment for this property or require further information.

- Split level modern villa
- Two large double bedrooms
- Modern fitted kitchen
- Dining Room
- Landscaped gardens
- Long driveway



Floor Plan



Area Map



Energy Efficiency Graph



These particulars, whilst believed to be accurate are set out as a general outline only for guidance and do not constitute any part of an offer or contract. Intending purchasers should not rely on them as statements of representation of fact, but must satisfy themselves by inspection or otherwise as to their accuracy. No person in this firm's employment has the authority to make or give any representation or warranty in respect of the property.