



13 West Thornlie Street

, Wishaw, ML2 7AR

Offers over £89,000

NEW TO THE MARKET!!

Rarely available and in an excellent central yet quiet location and with the preferred cul-de-sac setting, this mid-terraced villa must be internally viewed to be fully appreciated.

The accommodation comprises entrance hallway, lounge with ample space for dining, fitted dining kitchen, 3 bedrooms and bathroom.

Further benefits include double-glazing, gas central heating, off street parking and gardens to rear.

West Thornlie Street is situated a minutes walk from Wishaw Town Centre with all its amenities, including all shopping, schooling, transport facilities, leisure and recreational facilities. For the commuter the nearby M8 and M74 motorway networks allow for fast and easy access to Glasgow, Edinburgh and all points beyond.

EPC D.

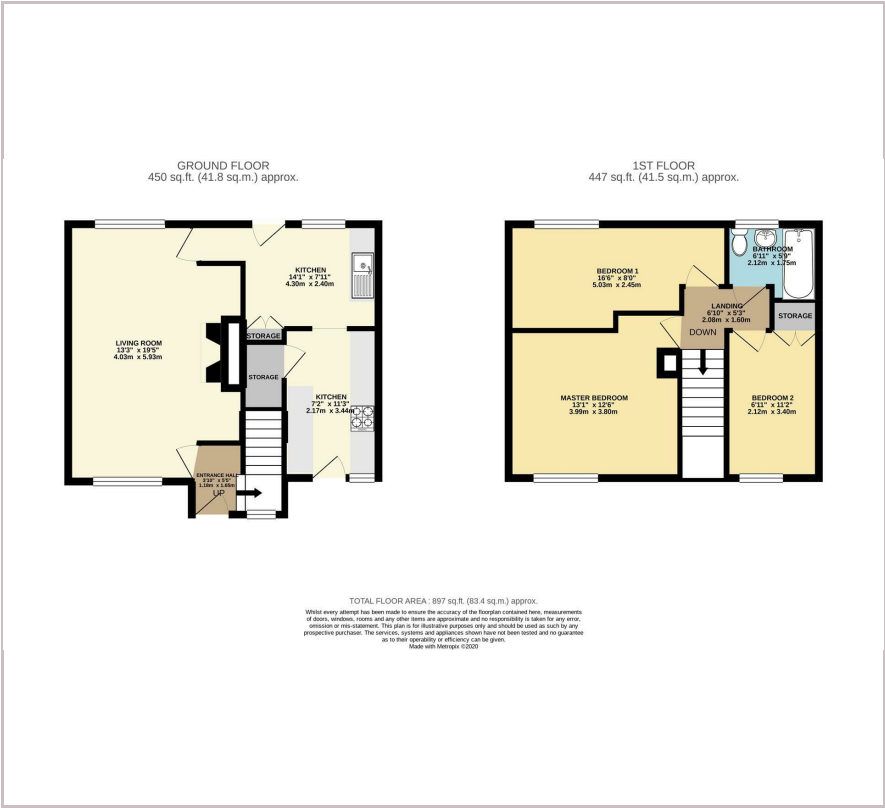
- Small quiet cul-de-sac
- Central to all amenities
- Three good sized bedrooms

Viewing

Please contact our Pomphreys Properties Ltd Office on 01698373365 if you wish to arrange a viewing appointment for this property or require further information.



Floor Plan



Area Map



Energy Efficiency Graph



These particulars, whilst believed to be accurate are set out as a general outline only for guidance and do not constitute any part of an offer or contract. Intending purchasers should not rely on them as statements of representation of fact, but must satisfy themselves by inspection or otherwise as to their accuracy. No person in this firms employment has the authority to make or give any representation or warranty in respect of the property.