



18A Main Street

, Wishaw, ML2 7AF

Offers in the region of £39,995

UNEXPECTEDLY BACK ON THE MARKET!!

A fantastic upper flat, centrally located and ideal for the buy to let market or first time buyer!!

The lovely modern accommodation comprises entrance stairwell, large bright lounge, dining fitted kitchen, double bedroom with wardrobes and immaculate shower room.

Further benefiting from Double Glazing, Gas Central Heating, ample storage and a shared enclosed courtyard to rear.

Situated on Wishaw Main Street within the Town Centre, where all day-to-day requirements can be catered for, from the commuting to Glasgow, Edinburgh and the central belt to all shopping and leisure pursuits.

EPC C

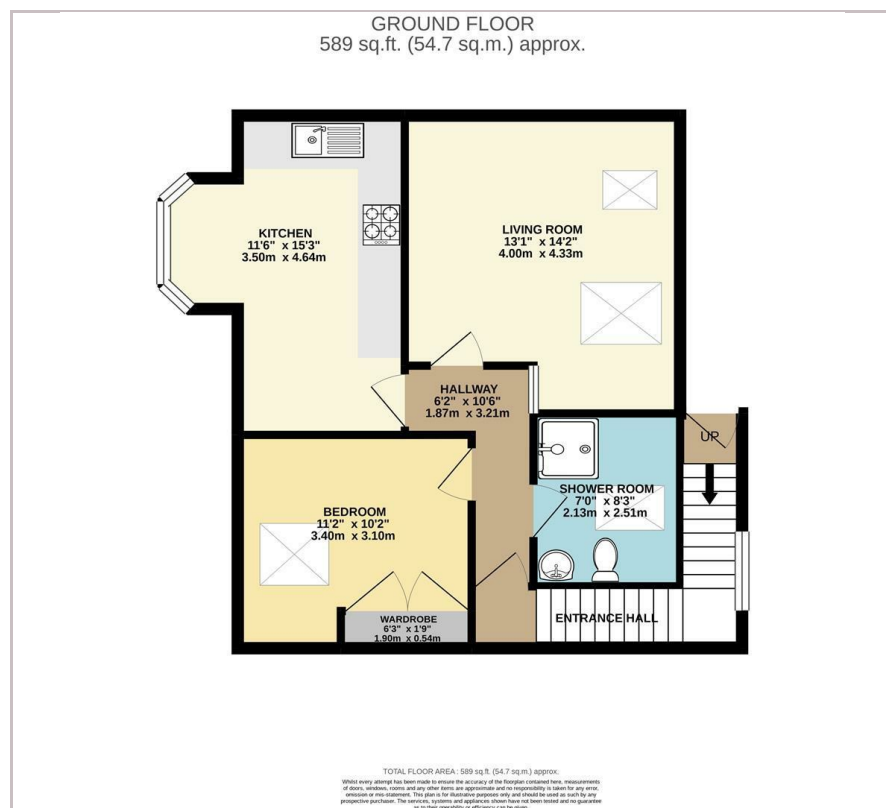
Viewing

Please contact our Pomphreys Properties Ltd Office on 01698373365 if you wish to arrange a viewing appointment for this property or require further information.

- Excellent Central Location
- Lovely shared rear courtyard
- Spacious dining kitchen
- Bright lounge
- Double Bedroom with storage



Floor Plan



Area Map



Energy Efficiency Graph



These particulars, whilst believed to be accurate are set out as a general outline only for guidance and do not constitute any part of an offer or contract. Intending purchasers should not rely on them as statements of representation of fact, but must satisfy themselves by inspection or otherwise as to their accuracy. No person in this firm's employment has the authority to make or give any representation or warranty in respect of the property.