



8 Erskine Gardens

, Shotts, ML7 4BP

Offers over £59,500

A lovely freshly decorated and newly carpeted ground floor flat situated in a modern well-maintained block, circa 2003, central to Shotts Centre with all amenities.

The accommodation comprises entrance hallway, lounge, fitted kitchen, two bedrooms and shower room.

Further benefits include designated parking, communal garden and drying area, double-glazing and electric storage heating.

Erskine Gardens is situated minutes from the Town Centre with all its amenities including all shops, schooling, recreational facilities and public transport links. For the commuter the nearby M8 motorway network allows for fast and easy access to Glasgow, Edinburgh and all points beyond.

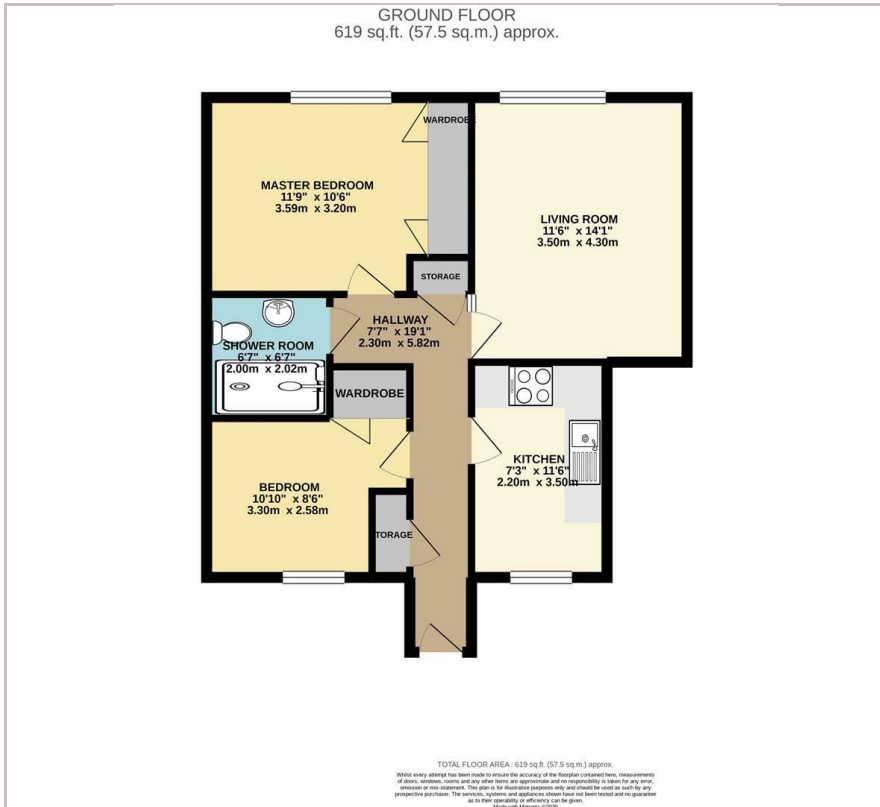
- Ground Floor Apartment
- Cul-de-sac Sited
- Newly carpeted throughout
- Freshly Decorated
- Allocated Parking

Viewing

Please contact our Pomphreys Properties Ltd Office on 01698373365 if you wish to arrange a viewing appointment for this property or require further information.



Floor Plan



Area Map



Energy Efficiency Graph



These particulars, whilst believed to be accurate are set out as a general outline only for guidance and do not constitute any part of an offer or contract. Intending purchasers should not rely on them as statements of representation of fact, but must satisfy themselves by inspection or otherwise as to their accuracy. No person in this firm's employment has the authority to make or give any representation or warranty in respect of the property.