



23 Greenknowe Street

, Wishaw, ML2 0QT

Offers over £66,000

CLOSING DATE SET!
TUESDAY 22ND DECEMBER AT NOON.

Upgrade required, a spacious semi detached villa located within a highly popular sought after location within Overtown Wishaw, with lovely open outlook to rear.

The accommodation comprises entrance hall, large lounge, dining kitchen, 2 double bedrooms and bathroom.

DG. GCH. Gardens to front and rear with driveway to side.

Overtown has a selection of small shops providing all day to day requirements and is situated a few minutes drive from Wishaw Town Centre which offers a wider range of shopping facilities and schooling. There are also excellent bus services nearby linking the surrounding towns and cities and for those commuting by car, access to the M74 both North and Southbound which in turn links to the M8 to Glasgow and Edinburgh.

EPC D.

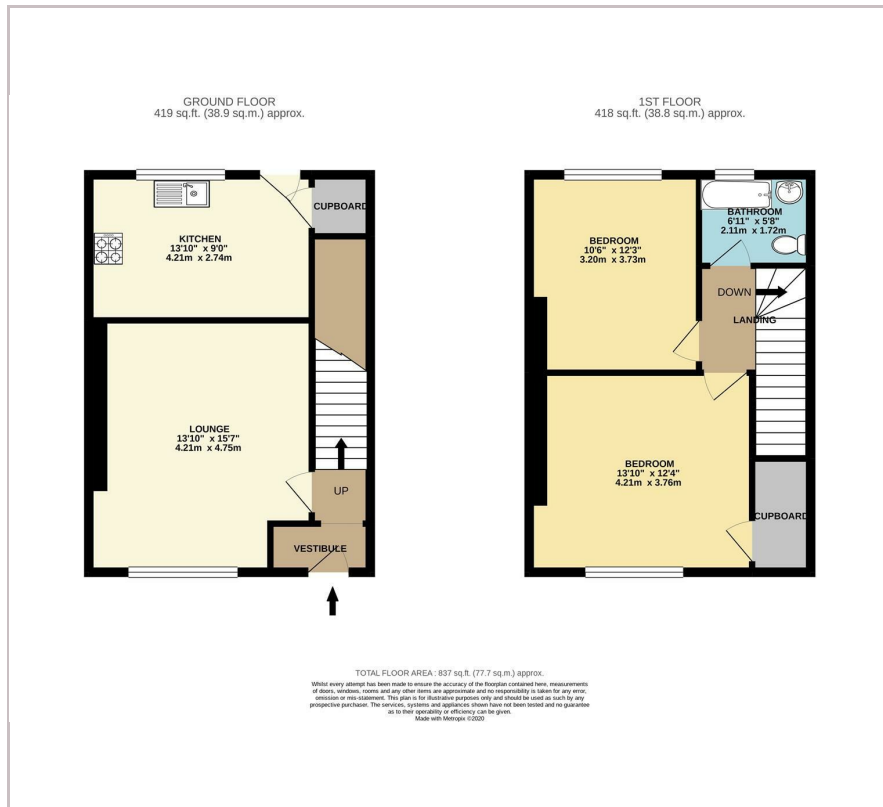
Viewing

Please contact our Pomphreys Properties Ltd Office on 01698373365 if you wish to arrange a viewing appointment for this property or require further information.

- Requires Upgrade
- Two Double Bedroom
- Fab open outlook to rear
- lovely quiet location within Overtown



Floor Plan



Area Map



Energy Efficiency Graph



These particulars, whilst believed to be accurate are set out as a general outline only for guidance and do not constitute any part of an offer or contract. Intending purchasers should not rely on them as statements of representation of fact, but must satisfy themselves by inspection or otherwise as to their accuracy. No person in this firm's employment has the authority to make or give any representation or warranty in respect of the property.