



14A Mason Court

Mason Lane, Motherwell, ML1 1YN

Offers over £69,000

CLOSING DATE SET TUESDAY 16TH FEBRUARY AT NOON!

A fantastic GROUND FLOOR flat, situated in a small well kept apartment block, central to all amenities and transport links.

The immaculate accommodation comprises entrance hall, large lounge, fitted modern kitchen with breakfast bar dining and integrated oven, 2 great sized bedrooms (master with fitted mirrored wardrobes) and four piece bathroom with fabulous freestanding roll top bath.

Further benefits include double glazing, gas central heating, secure door entry system, parking and communal gardens.

Located close to Motherwell Town Centre, there are a wide range of amenities, including schools, shops and sports and recreational facilities, including Strathclyde Country Park and its many leisure pursuits. There is a mainline train station which offers services to both Glasgow and Edinburgh. A comprehensive motorway network nearby, including M73, M74 and M8, offers excellent commuting access to all over the central belt and beyond.

EPC C

Viewing

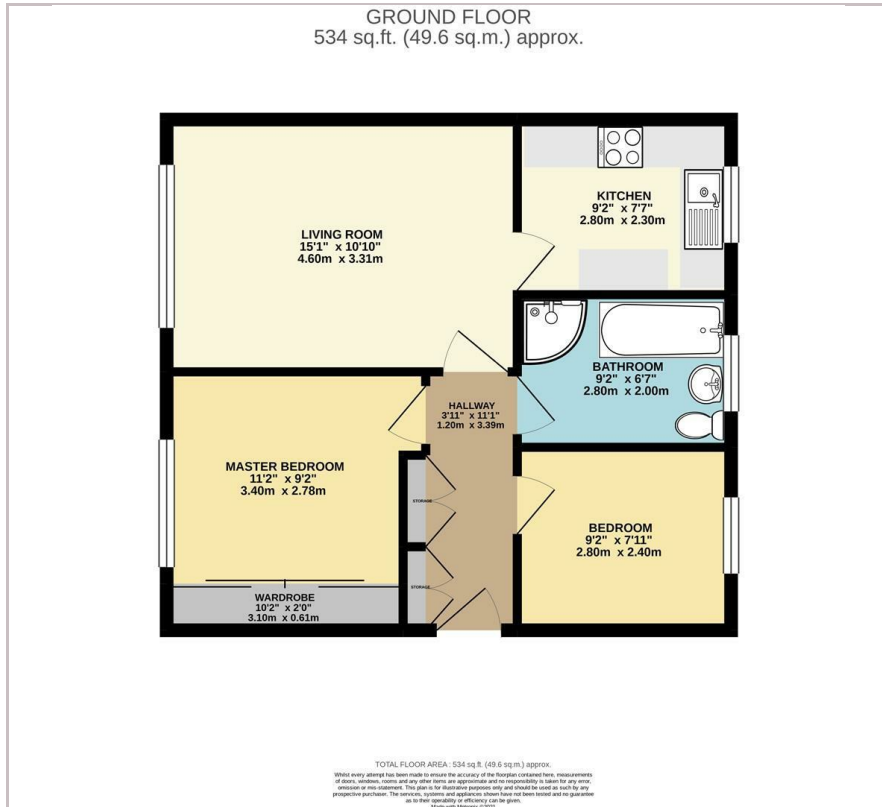
Please contact our Pomphreys Properties Ltd Office on 01698373365 if you wish to arrange a viewing appointment for this property or require further information.

CLOSING DATE SET TUESDAY 16TH FEBRUARY AT NOON!

- Immaculate LOWER flat
- 2 good sized bedrooms
- Modern fitted dining kitchen
- Parking
- Fab four piece bathroom with roll top bath



Floor Plan



Area Map



Energy Efficiency Graph



These particulars, whilst believed to be accurate are set out as a general outline only for guidance and do not constitute any part of an offer or contract. Intending purchasers should not rely on them as statements of representation of fact, but must satisfy themselves by inspection or otherwise as to their accuracy. No person in this firm's employment has the authority to make or give any representation or warranty in respect of the property.