



27 Carnwath Road

Kilncadzow, Carlisle, ML8 4QW

Offers over £135,000

IN NEED OF INTERNAL UPGRADE AND MODERNISATION
CLOSING DATE SET - FRIDAY 26TH FEBRUARY AT NOON

A spacious detached cottage set within a large landscaped plot in the village of Kilncadzow, on the outskirts of Carlisle.

The accommodation comprises entrance porch, reception hallway, large lounge, fitted dining kitchen, utility room, 2 double bedrooms, bathroom and cloakroom/wc.

There is an outbuilding and a large workshop attached to the property.

Benefits from double glazing and oil central heating. Garage.

The small village of Kilncadzow is situated on the outskirts of Carlisle with its many amenities, including all schooling, public transport and recreational facilities. For the commuter the M8 & M74 motorway networks allow for fast and easy access to Glasgow, Edinburgh and all points beyond.

EPC E.

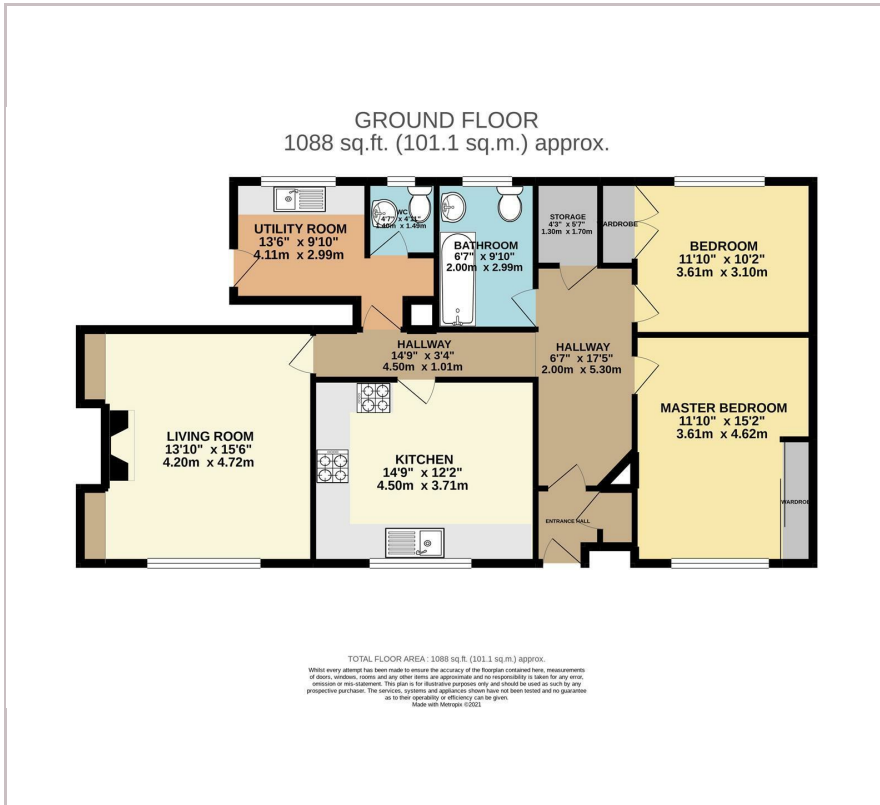
Viewing

Please contact our Pomphreys Properties Ltd Office on 01698373365 if you wish to arrange a viewing appointment for this property or require further information.

- IN NEED OF INTERNAL UPGRADE
- LARGE LANDSCAPED PLOT
- WORKSHOP ATTACHED TO PROPERTY
- GARAGE



Floor Plan



Area Map



Energy Efficiency Graph



These particulars, whilst believed to be accurate are set out as a general outline only for guidance and do not constitute any part of an offer or contract. Intending purchasers should not rely on them as statements of representation of fact, but must satisfy themselves by inspection or otherwise as to their accuracy. No person in this firm's employment has the authority to make or give any representation or warranty in respect of the property.