



## 59 Russell Street

, Wishaw, ML2 7AL

**Offers over £59,500**

### NEW TO THE MARKET!

A lovely immaculate upper flat, upkept to the highest of standards by the current owner, situated in a central area close to all amenities and within walking distance to shops and transport links.

The accommodation comprises reception hall, large bright lounge, fitted modern kitchen, 2 bedrooms and fab bathroom.

Further benefits include Double Glazing, Gas Central Heating and garage. EPC E.

Russell Street is situated a minutes stroll from Wishaw Town Centre with all its amenities, including all shopping, schooling, transport facilities, leisure and recreational facilities. For the commuter the train station is a short walk away and the nearby M8 and M74 motorway networks allow for fast and easy access to Glasgow, Edinburgh and all points beyond.

### Viewing

Please contact our Pomphreys Properties Ltd Office on 01698373365 if you wish to arrange a viewing appointment for this property or require further information.

- Central to all amenities
- Immaculate upper flat
- Modern kitchen
- Lovely bathroom
- Super sized master bedroom



2



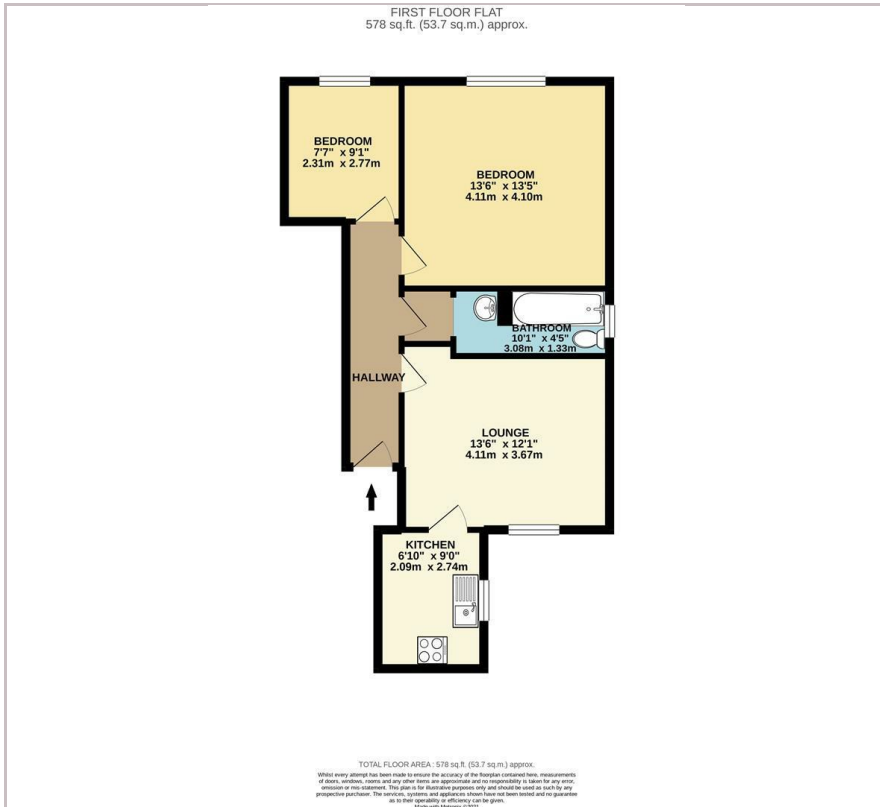
1



1



## Floor Plan



## Area Map



## Energy Efficiency Graph



These particulars, whilst believed to be accurate are set out as a general outline only for guidance and do not constitute any part of an offer or contract. Intending purchasers should not rely on them as statements of representation of fact, but must satisfy themselves by inspection or otherwise as to their accuracy. No person in this firm's employment has the authority to make or give any representation or warranty in respect of the property.