



## 48 Duns Crescent

, Wishaw, ML2 8SD

**Offers over £74,000**

**CLOSING DATE SET!**  
WEDNESDAY 7TH APRIL AT NOON!

A beautifully presented and extremely spacious two bedroom mid terrace villa located within a popular locale in Wishaw. This well-appointed property would be a fantastic opportunity for the first-time buyer or young family market and offers flexible accommodation over two levels.

On arrival at the property, there are super parking facilities at the front to allow numerous spaces for both residents and visitors.

Internally, on the lower level the accommodation comprises reception hallway, large lounge, beautiful fitted modern kitchen with a host of integrated appliances comprising oven, hob, cooker hood, fridge, freezer, washing machine and tumble dryer and a bright conservatory offering access and overlooking the rear garden.

On the upper level are two great sized double bedrooms and three-piece family bathroom. The home is heated via gas central heating and double glazed windows are installed throughout.

Landscaped rear garden with level lawn and paved patio area completes the property. EPC D.

- Immaculate modern and spacious mid terraced villa!
- Two double bedrooms
- Ample off street parking to front
- Super conservatory
- Landscaped rear garden
- Fab kitchen with integrated appliances

### Viewing

Please contact our Pomphreys Properties Ltd Office on 01698373365 if you wish to arrange a viewing appointment for this property or require further information.



2



1

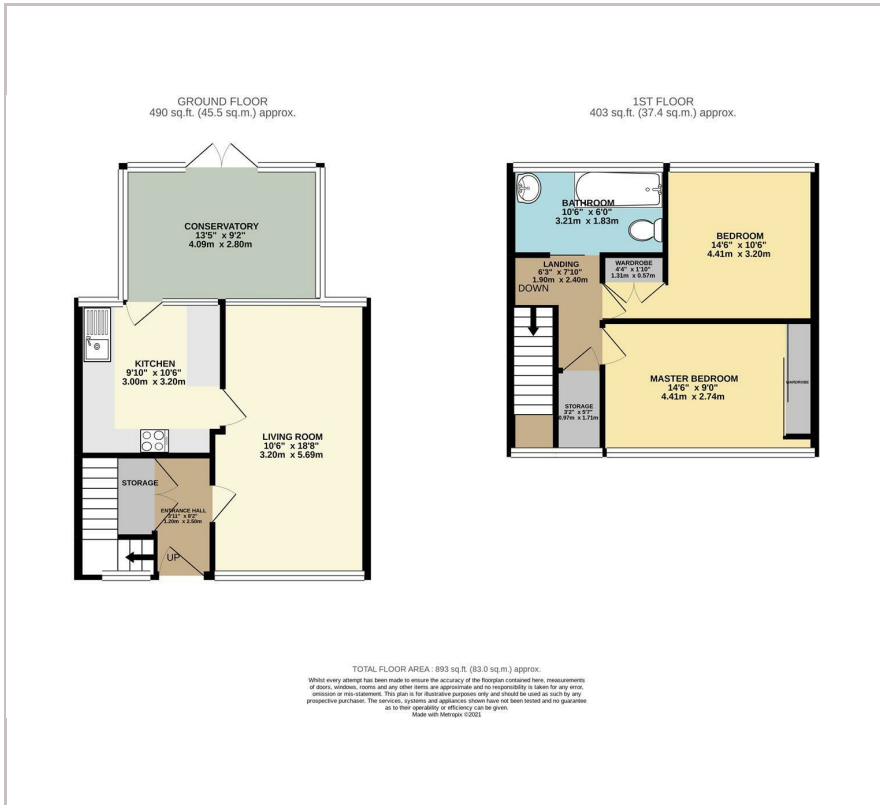


2





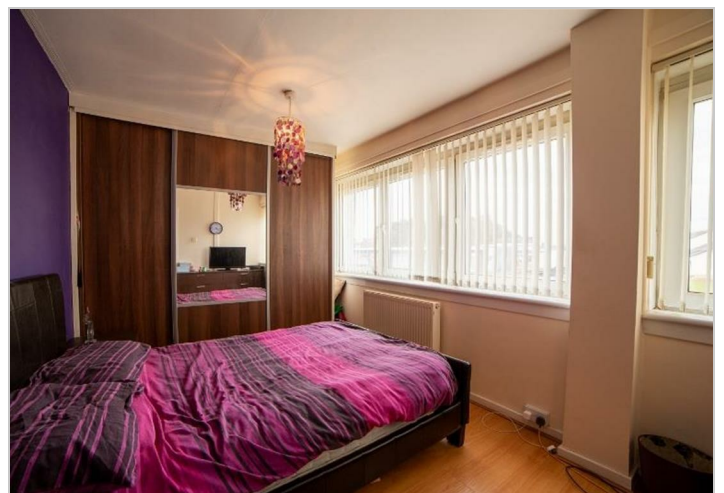
## Floor Plan



## Area Map



## Energy Efficiency Graph



These particulars, whilst believed to be accurate are set out as a general outline only for guidance and do not constitute any part of an offer or contract. Intending purchasers should not rely on them as statements of representation of fact, but must satisfy themselves by inspection or otherwise as to their accuracy. No person in this firm's employment has the authority to make or give any representation or warranty in respect of the property.