



301 Stirling Road

Stand, Airdrie, ML6 7FP

Offers over £158,000

NEW TO THE MARKET!

A fabulous newly decorated semi detached bungalow located within Stane, Airdrie.

This attractive semi-Rural property offers a layout formed all on the one level and should appeal greatly to those wishing to downsize,

This property offers deceptively spacious accommodation of well-proportioned apartments that consist of welcoming reception hallway leading to a large bright lounge with wood burner, fitted kitchen with breakfasting bar, conservatory, three bedrooms (two with fitted wardrobes) and shower room.

Features of the property include electric central heating, double glazing, lovely well tended gardens to front, with the rear being mainly landscaped for ample parking and a double garage.

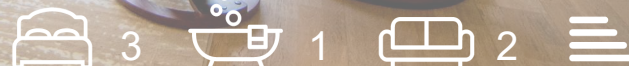
Stand is a small village located between Airdrie and Cumbernauld. These nearby towns offer a wide range of shopping facilities, restaurants and sports facilities as well as regular bus and train services to the surrounding towns and cities including Glasgow, Edinburgh and beyond.

EPC D

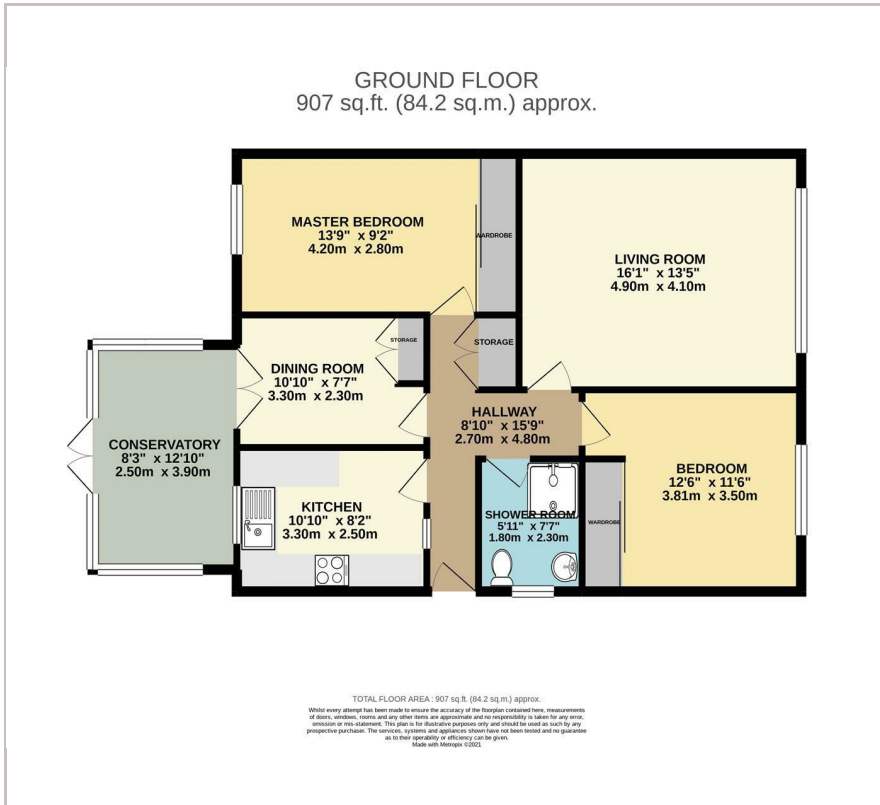
Viewing

Please contact our Pomphreys Properties Ltd Office on 01698373365 if you wish to arrange a viewing appointment for this property or require further information.

- Immaculately presented
- Freshly decorated
- Three bedrooms
- Conservatory
- Double Garage
- Ample off road parking
- Large lounge with wood burner



Floor Plan



Area Map



Energy Efficiency Graph



These particulars, whilst believed to be accurate are set out as a general outline only for guidance and do not constitute any part of an offer or contract. Intending purchasers should not rely on them as statements of representation of fact, but must satisfy themselves by inspection or otherwise as to their accuracy. No person in this firm's employment has the authority to make or give any representation or warranty in respect of the property.