



6 Rosewood

, Wishaw, ML2 0FJ

Offers over £154,000

CLOSING DATE SET!!
TUESDAY 18TH MAY AT NOON

A spacious semi-detached villa set within a highly sought-after development within Netherton.

This well-proportioned property offers flexible living space over two levels.

On arrival, the property occupies a lovely plot and a mono-block driveway to front allows excellent parking facilities.

Internally the accommodation comprises reception hallway, lounge, dining room, fitted kitchen and garage conversion, currently utilised as a downstairs fourth bedroom.

On the upper level, there are three good sized bedrooms, all with fitted wardrobes and master en suite and a family bathroom. The home has gas central heating and double glazed windows are installed throughout.

The landscaped low maintenance rear garden grounds offer excellent exposure to natural sunlight and comprises a decked area, patios and raised border, all bound secure by timber fencing, perfect for all the family

The property is located close to central Wishaw which offers a wide range of shopping facilities, sports facilities,

- Garage Conversion!
- Three bedrooms
- Dining Room
- Lovely landscaped gardens
- Driveway
- Fitted kitchen
- Double Glazing & Gas Central Heating

Viewing

Please contact our Pomphreys Properties Ltd Office on 01698373365 if you wish to arrange a viewing appointment for this property or require further information.



3



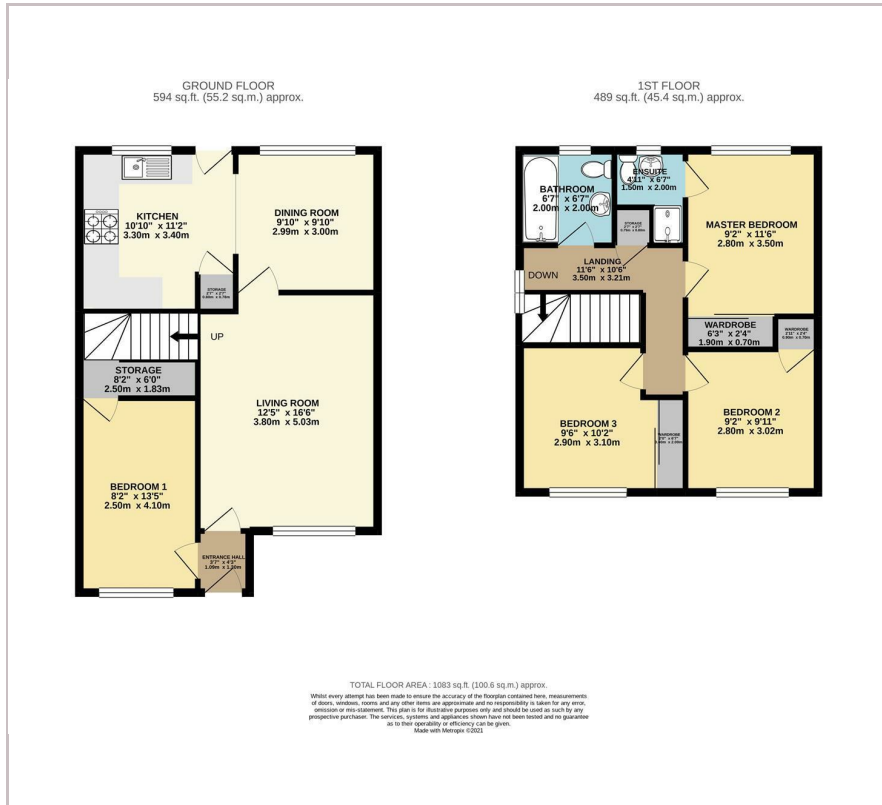
2



3



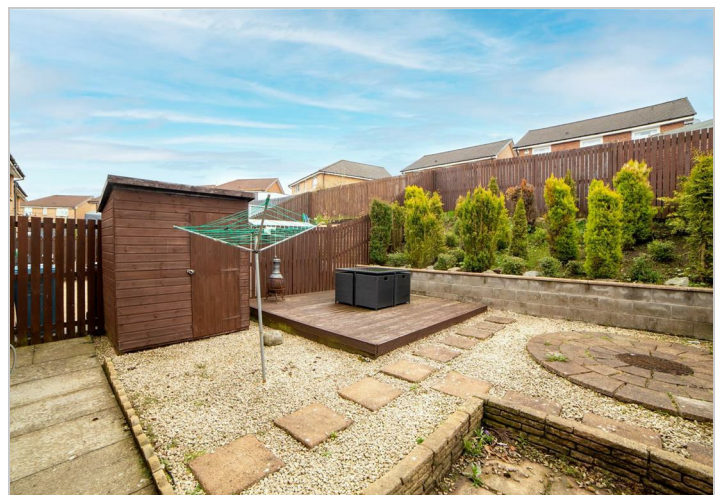
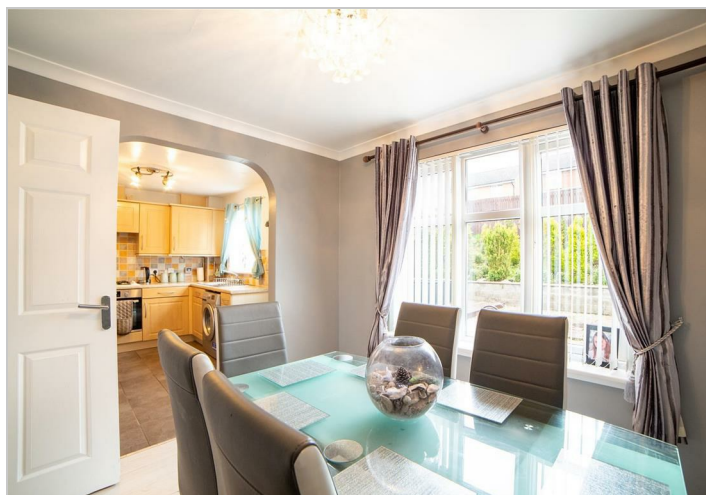
Floor Plan



Area Map



Energy Efficiency Graph



These particulars, whilst believed to be accurate are set out as a general outline only for guidance and do not constitute any part of an offer or contract. Intending purchasers should not rely on them as statements of representation of fact, but must satisfy themselves by inspection or otherwise as to their accuracy. No person in this firms employment has the authority to make or give any representation or warranty in respect of the property.