



10 Derby Wynd

Carfin, Motherwell, ML1 4GE

Offers over £84,000

NEW TO THE MARKET!

A generously proportioned ground floor apartment situated within a desirable private development in Carfin. This fabulous property comprises a welcoming hallway, spacious bright lounge with dual aspects and ample space for dining, fitted kitchen, two double bedrooms both with wardrobes, master en suite and bathroom.

Further benefits of double glazing, gas central heating, residents parking and communal gardens.

EPC C.

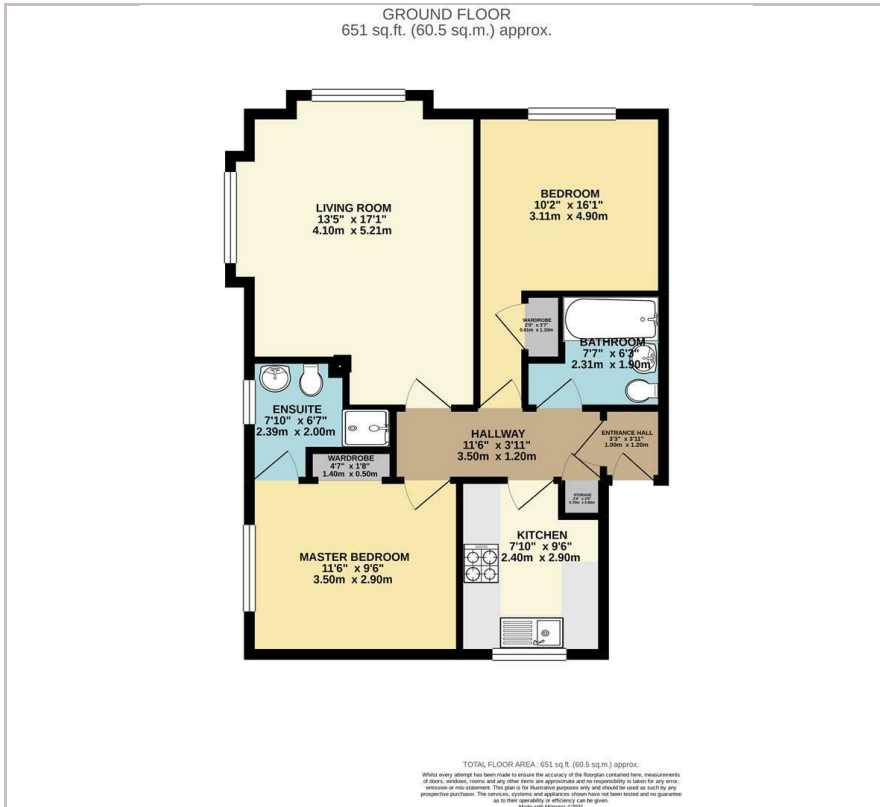
Viewing

Please contact our Pomphreys Properties Ltd Office on 01698373365 if you wish to arrange a viewing appointment for this property or require further information.

- Ground Floor Apartment!
- Great sized bright lounge
- fitted kitchen
- 2 double bedrooms
- Master bedroom en suite
- Residents Parking



Floor Plan



Area Map



Energy Efficiency Graph



These particulars, whilst believed to be accurate are set out as a general outline only for guidance and do not constitute any part of an offer or contract. Intending purchasers should not rely on them as statements of representation of fact, but must satisfy themselves by inspection or otherwise as to their accuracy. No person in this firm's employment has the authority to make or give any representation or warranty in respect of the property.