



57 Cowie Place

, Wishaw, ML2 7US

Offers over £94,000

NEW TO THE MARKET!!!

Looking for a fab **GROUND** floor apartment within Craigneuk, Wishaw?

A stunning property comprising entrance hall, large lounge open plan to fitted kitchen, 2 great sized bright bedrooms, study and bathroom.

DG. Electric Heating. Parking to rear. EPC D.

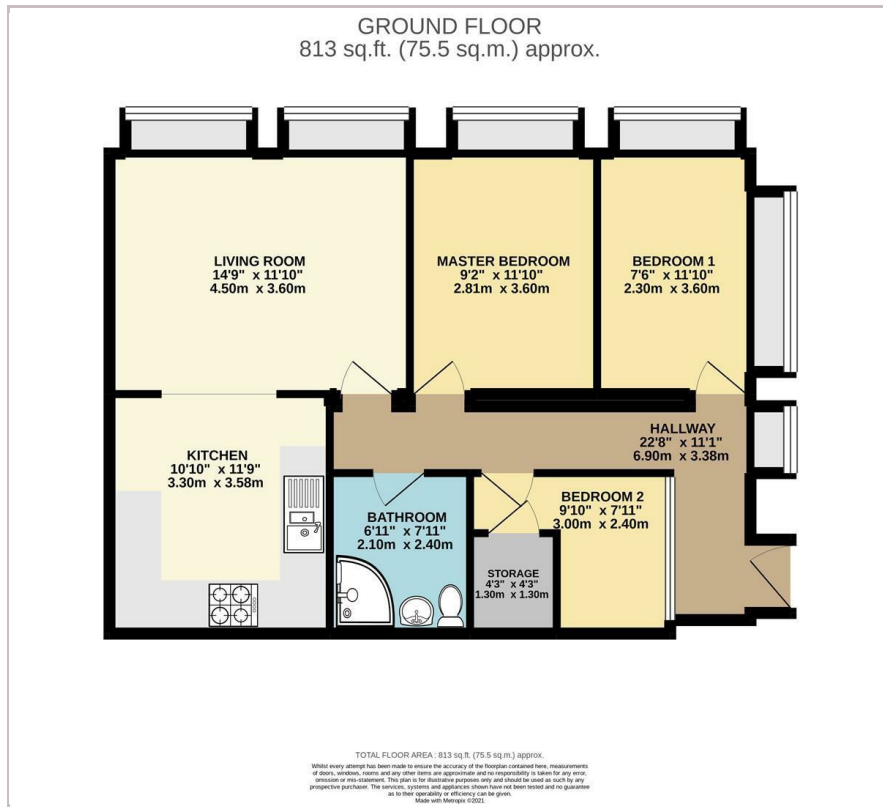
- Fantastic opportunity to purchase!
- Great sized **GROUND** floor apartment
- Lovely bright spacious rooms
- Fab fitted kitchen
- Large Lounge
- 2 super sized bedrooms
- study/home office
- Parking to rear

Viewing

Please contact our Pomphreys Properties Ltd Office on 01698373365 if you wish to arrange a viewing appointment for this property or require further information.



Floor Plan



Area Map



Energy Efficiency Graph



These particulars, whilst believed to be accurate are set out as a general outline only for guidance and do not constitute any part of an offer or contract. Intending purchasers should not rely on them as statements of representation of fact, but must satisfy themselves by inspection or otherwise as to their accuracy. No person in this firm's employment has the authority to make or give any representation or warranty in respect of the property.