



15 Milfield Avenue

, Motherwell, ML1 1HF

Offers over £54,000

NEW TO THE MARKET!

A spacious ground floor flat in Motherwell set within the preferred cul-de-sac setting.

Accommodation comprising entrance reception hallway, large lounge, fitted kitchen, 2 double bedrooms and bathroom.

The home is heated via gas central heating and double glazed windows are installed throughout. Garden areas to side and rear of the property.

The property would be a fantastic opportunity for the first time buyer, buy to let investment or someone looking to downsize.

EPC D.

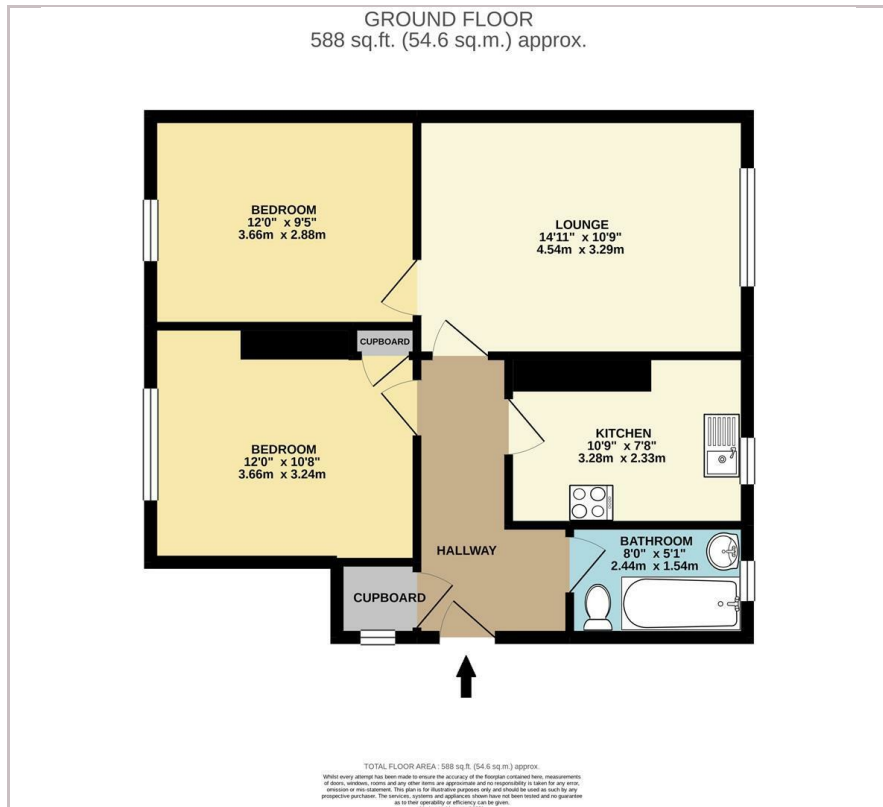
Viewing

Please contact our Pomphreys Properties Ltd Office on 01698373365 if you wish to arrange a viewing appointment for this property or require further information.

- Two double bedrooms
- Ground Floor
- Ideal Buy to Let investment



Floor Plan



Area Map



Energy Efficiency Graph



These particulars, whilst believed to be accurate are set out as a general outline only for guidance and do not constitute any part of an offer or contract. Intending purchasers should not rely on them as statements of representation of fact, but must satisfy themselves by inspection or otherwise as to their accuracy. No person in this firm's employment has the authority to make or give any representation or warranty in respect of the property.