



114 Laurel Drive

, Wishaw, ML2 7RF

Offers over £64,000

CLOSING DATE SET
WEDNESDAY 30TH JUNE AT 2PM

Situated within a popular pocket of Craigneuk Wishaw and offering generous accommodation over two levels lies this spacious end terraced villa situated minutes from the Town Centre and all amenities.

The accommodation is formed over two levels and comprises, on the ground floor, entrance hall, lounge, fitted kitchen and dining room/bedroom. On the upper floor are a further two double bedrooms and bathroom.

The home is heated via gas central heating and double glazed windows are installed throughout. Gardens to front and rear with a driveway to side leading to the garage.

The property offers a fantastic opportunity to the first time buyer or indeed the young family market.

The property is located close by to central Wishaw which offers a wide range of shopping facilities, sports facilities and schooling. There are also excellent bus and train services linking the surrounding towns and cities and for those commuting by car, there is access to the M74 both North and Southbound which in turn links to the M8 to Glasgow and Edinburgh.

EPC D

- CLOSING DATE 30 JUNE AT 2PM
- Gardens to front and rear
- Driveway
- Three bedrooms

Viewing

Please contact our Pomphreys Properties Ltd Office on 01698373365 if you wish to arrange a viewing appointment for this property or require further information.



3



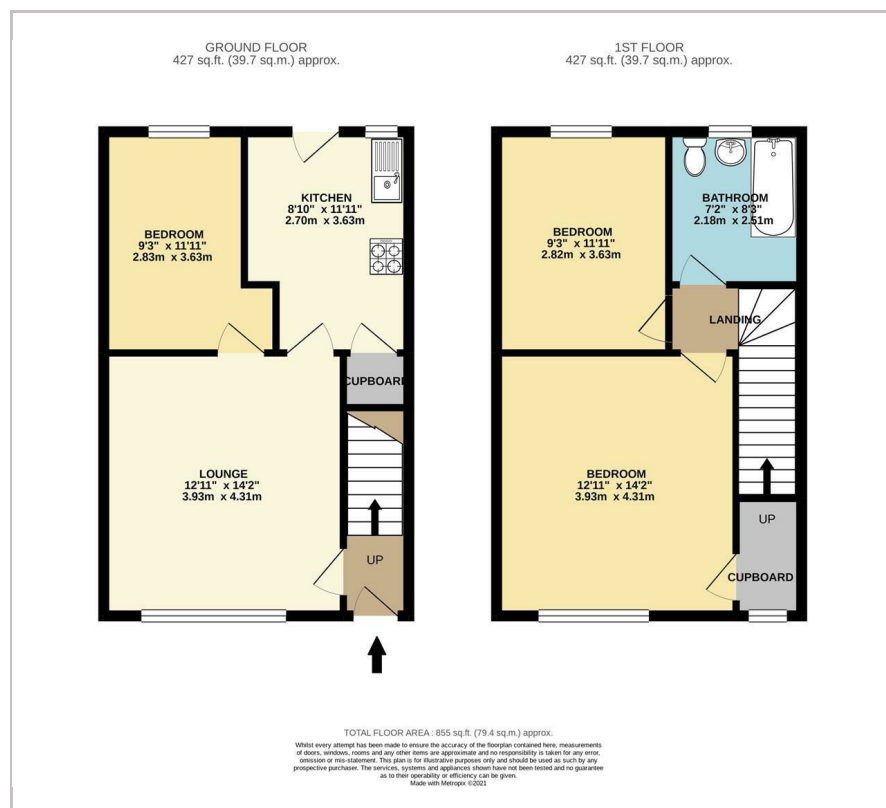
1



1



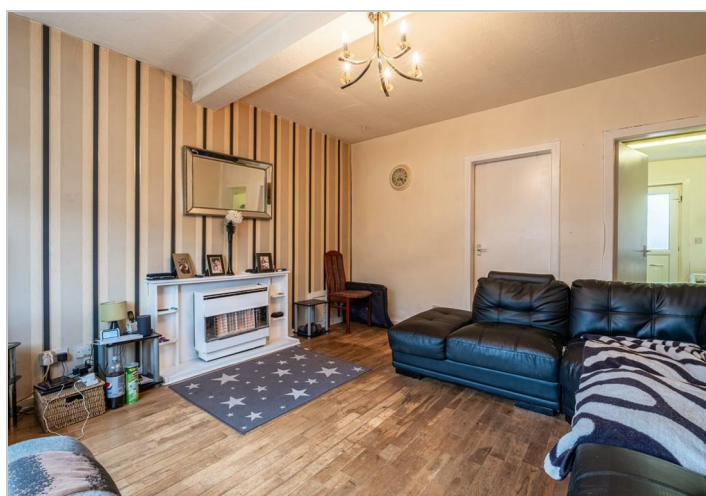
Floor Plan



Area Map



Energy Efficiency Graph



These particulars, whilst believed to be accurate are set out as a general outline only for guidance and do not constitute any part of an offer or contract. Intending purchasers should not rely on them as statements of representation of fact, but must satisfy themselves by inspection or otherwise as to their accuracy. No person in this firm's employment has the authority to make or give any representation or warranty in respect of the property.