



## 12 Faraday Avenue

, Wishaw, ML2 7DS

**Offers over £77,000**

CLOSING DATE SET - MONDAY 9TH AUGUST 2021 AT NOON

A lovely, immaculate and spacious lower flat situated central to Town Centre and all amenities.

The accommodation comprises entrance hall, large bright lounge with double windows to front, fitted kitchen, 2 bedrooms and wet room.

Further benefits include double glazing, gas central heating, parking to front, secure door entry system and communal gardens to front and rear.

Faraday Avenue is located a few minutes walk or drive from a selection of amenities in Wishaws centre. Supermarkets, Shops, Restaurants and Leisure Facilities are all within easy reach as are Primary and Secondary Schools. This location is ideal for the commuter with easy access to both the M74 and M8 motorways.

EPC C

### Viewing

Please contact our Pomphreys Properties Ltd Office on 01698373365 if you wish to arrange a viewing appointment for this property or require further information.

- Two double bedrooms
- Central to all amenities
- Ample parking
- secure door entry system
- Lovely bright lounge with double windows



2



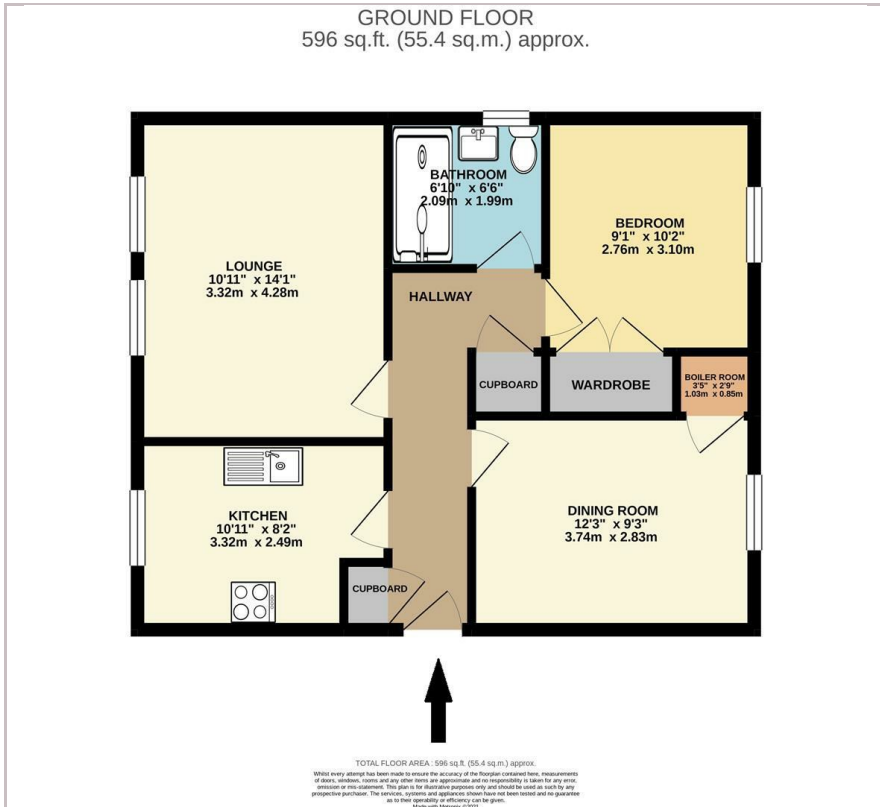
1



1



## Floor Plan



## Area Map



## Energy Efficiency Graph



These particulars, whilst believed to be accurate are set out as a general outline only for guidance and do not constitute any part of an offer or contract. Intending purchasers should not rely on them as statements of representation of fact, but must satisfy themselves by inspection or otherwise as to their accuracy. No person in this firm's employment has the authority to make or give any representation or warranty in respect of the property.