



45 Langholm Crescent

, Wishaw, ML2 7HE

Offers over £78,000

CLOSING DATE SET TUESDAY 17TH AUGUST AT NOON

Situated within a popular pocket of Wishaw and offering generous accommodation over two levels, lies this spacious end terraced villa, situated minutes from the Town Centre and all amenities.

The accommodation comprises entrance hall, lounge with ample space for dining, focal feature fireplace and dual aspects to front and rear, fitted kitchen, two good sized double bedrooms and bathroom.

Set within substantial garden grounds, the home is heated via gas central heating and mostly single glazed units with the main bedroom being double glazed.

The property offers a fantastic opportunity to the first time buyer, buy to let investor or indeed the young family market.

The property is located close by to central Wishaw which offers a wide range of shopping facilities, sports facilities and schooling. There are also excellent bus and train services linking the surrounding towns and cities and for those commuting by car, there is access to the M74 both North and Southbound which in turn links to the M8 to Glasgow and Edinburgh.

EPC D.

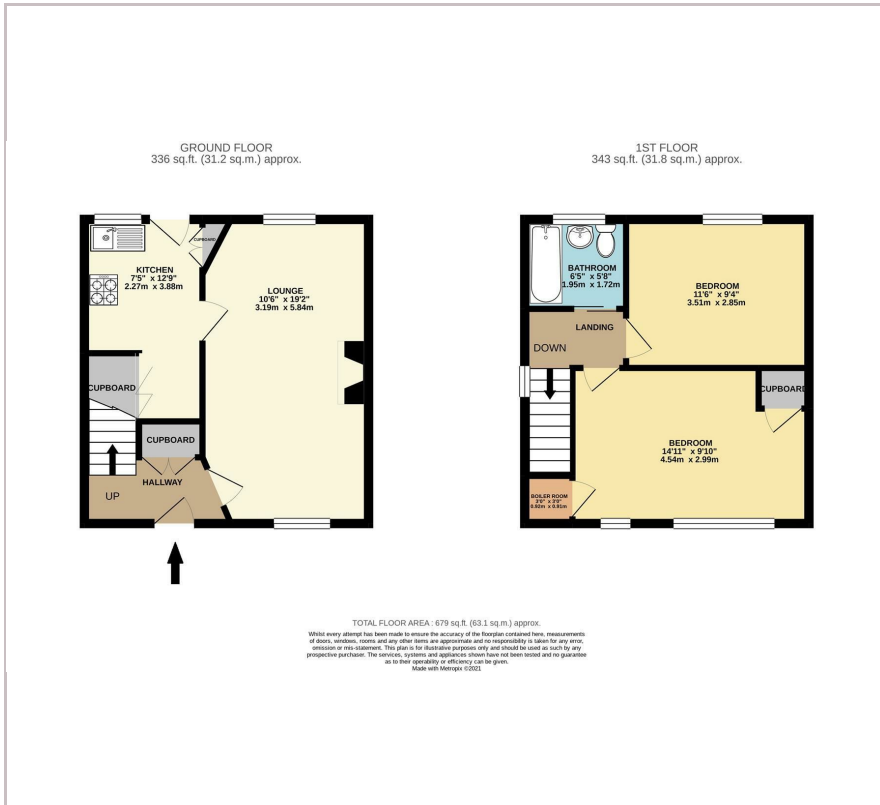
Viewing

Please contact our Pomphreys Properties Ltd Office on 01698373365 if you wish to arrange a viewing appointment for this property or require further information.

- CLOSING DATE SET TUESDAY 17TH AUGUST AT NOON
- End Terraced Villa
- Two double bedrooms
- Private gardens



Floor Plan



Area Map



Energy Efficiency Graph



These particulars, whilst believed to be accurate are set out as a general outline only for guidance and do not constitute any part of an offer or contract. Intending purchasers should not rely on them as statements of representation of fact, but must satisfy themselves by inspection or otherwise as to their accuracy. No person in this firm's employment has the authority to make or give any representation or warranty in respect of the property.