



91 Ivanhoe Crescent

, Wishaw, ML2 7DT

Fixed asking price £69,995

NEW FIXED PRICING!!!

An immaculate ground floor flat central to all amenities.

The accommodation comprises entrance hall, large lounge with feature fire place, fitted kitchen with breakfast bar, 2 double bedrooms (one with fitted mirrored wardrobes) and immaculate wet room.

Further benefits include double glazing, gas central heating, long driveway leading to garage and communal gardens to rear.

Ivanhoe Crescent is situated a few minutes walk from Wishaw Town Centre where all day-to-day requirements can be catered for including all shops, schooling, recreational and leisure pursuits. For the commuter, there are excellent public transport links to Glasgow, Edinburgh and all points beyond.

EPC C

Viewing

Please contact our Pomphreys Properties Ltd Office on 01698373365 if you wish to arrange a viewing appointment for this property or require further information.

- Immaculate Lower Flat
- Two Double Bedrooms
- Communal Garden to rear
- Driveway
- Garage



2



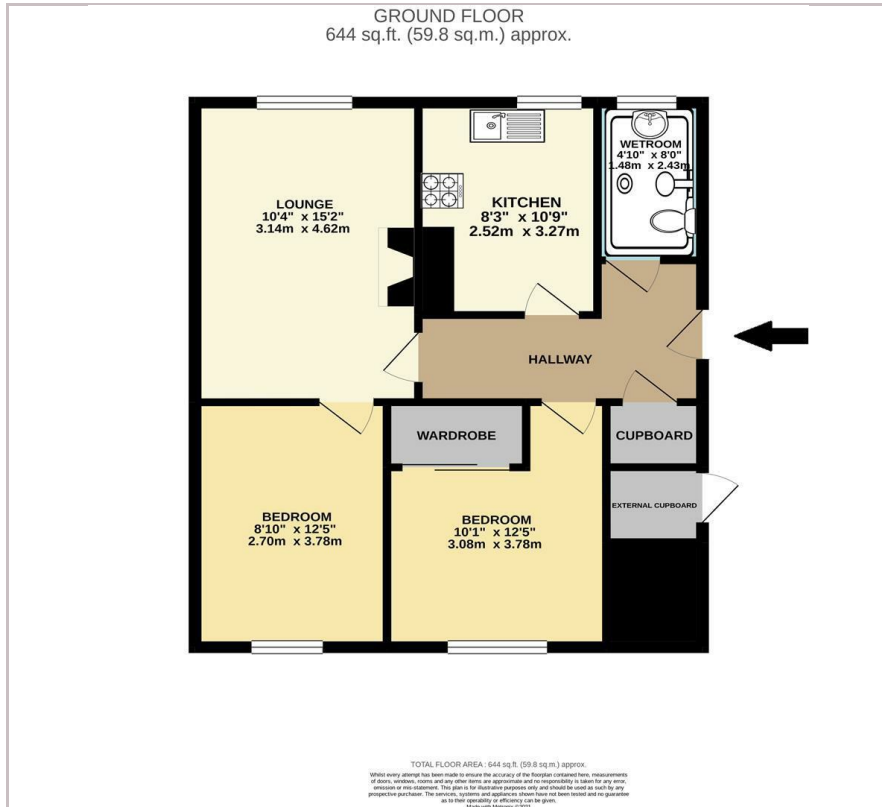
1



null



Floor Plan



Area Map



Energy Efficiency Graph



These particulars, whilst believed to be accurate are set out as a general outline only for guidance and do not constitute any part of an offer or contract. Intending purchasers should not rely on them as statements of representation of fact, but must satisfy themselves by inspection or otherwise as to their accuracy. No person in this firm's employment has the authority to make or give any representation or warranty in respect of the property.