



22 Bute Crescent

, Shotts, ML7 4HF

Offers over £84,000

NEW TO THE MARKET!

An extremely spacious mid terraced villa located within Shotts.

Accommodation comprises entrance hall, large lounge with patio door offering access and overlooking the landscaped rear garden, fitted modern kitchen with breakfast bar, three double bedrooms (two with fitted cupboards) and wet room.

Further benefits include double glazing, gas central heating and monoblocked front providing ample off street parking.

The rear garden has a decked area, paved patio, raised flower beds and level lawn, all enclosed by timber fencing.

Situated in a quiet residential area of Shotts yet central to the Town, 5 minutes from the M8 and only 20 miles from Glasgow and Edinburgh. The town centre of Shotts has a variety of amenities to offer including all shopping and leisure facilities. The train station offers direct links to Glasgow and Edinburgh

- Mid Terraced Family Home
- Large Lounge with Patio Doors
- Three Double Bedrooms
- Landscaped rear garden
- Off street parking

Viewing

Please contact our Pomphreys Properties Ltd Office on 01698373365 if you wish to arrange a viewing appointment for this property or require further information.



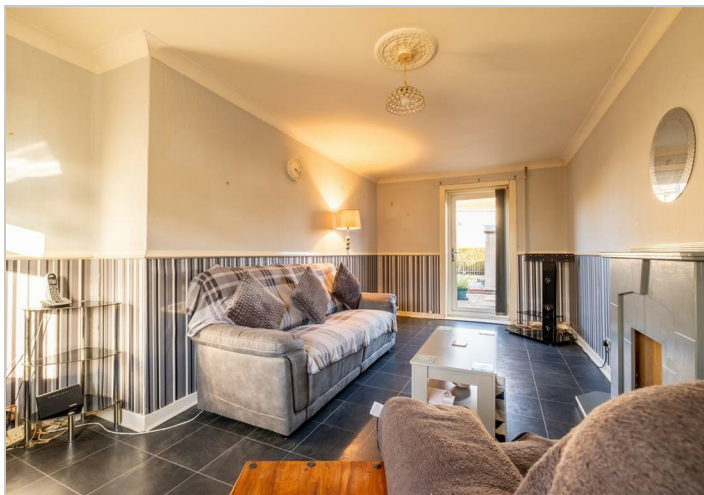
Floor Plan



Area Map



Energy Efficiency Graph



These particulars, whilst believed to be accurate are set out as a general outline only for guidance and do not constitute any part of an offer or contract. Intending purchasers should not rely on them as statements of representation of fact, but must satisfy themselves by inspection or otherwise as to their accuracy. No person in this firms employment has the authority to make or give any representation or warranty in respect of the property.