



16 May Gardens

, Wishaw, ML2 7PB

Offers over £118,000

NEW TO THE MARKET!!

Are you looking for an extremely spacious, modern and well presented two bedroom upper apartment with designated parking, communal lift, newly carpeted lounge and within a central and sought after location within Wishaw?

The accommodation on offer is set on the top floor with entry via a secure entry door buzzer system into welcoming reception hallway, bright and spacious lounge with dual aspects and ample space for dining, fitted kitchen with integrated kitchen appliances of fridge freezer, dishwasher, microwave, oven hob and cooker hood, two double bedrooms both with fitted wardrobes, master bedroom having its own en-suite shower room and bathroom with integrated washing machine

Features of the property include gas central heating, double glazing and a loft adding to the already ample storage available. Externally the property has communal well kept gardens and extra visitors parking bays.

Located central to all amenities in Wishaws centre. Supermarkets, Shops, Restaurants and Leisure Facilities are all within easy reach as are Primary and Secondary Schools. This location is ideal for the commuter with easy access to both the M74 and M8 motorways.

EPC C

- Upper Apartment
- Two double bedrooms with wardrobes
- Lift to apartment
- DG & GCH
- Modern kitchen with appliances
- Designated Parking
- Large bright lounge

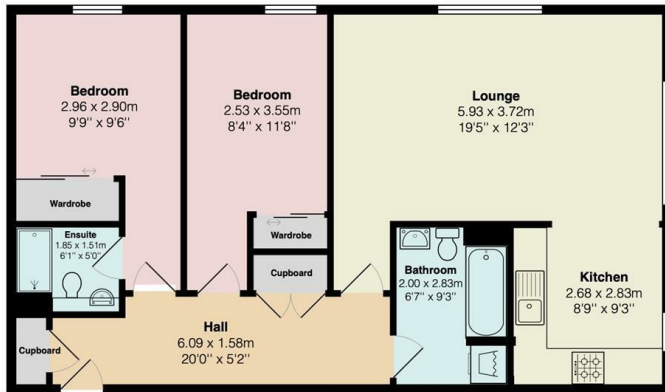
Viewing

Please contact our Pomphreys Properties Ltd Office on 01698373365 if you wish to arrange a viewing appointment for this property or require further information.



Floor Plan

16 May Gardens, Wishaw



Ground Floor

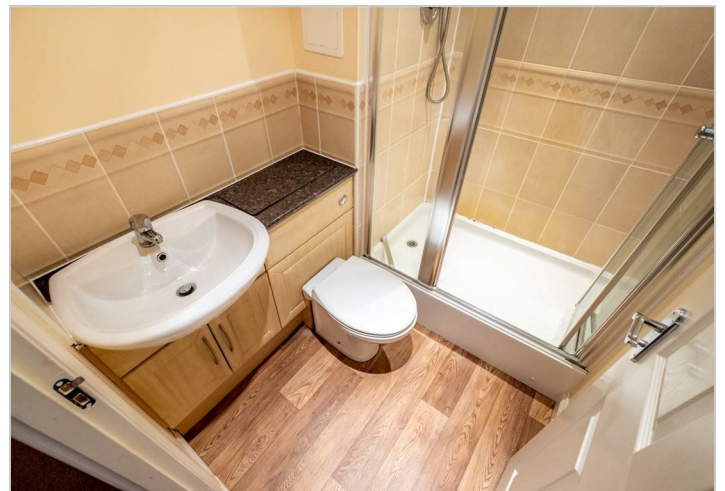
Total Area: 77.8 m² ... 838 ft²

All measurements are approximate and for display purposes only

Area Map



Energy Efficiency Graph



These particulars, whilst believed to be accurate are set out as a general outline only for guidance and do not constitute any part of an offer or contract. Intending purchasers should not rely on them as statements of representation of fact, but must satisfy themselves by inspection or otherwise as to their accuracy. No person in this firm's employment has the authority to make or give any representation or warranty in respect of the property.