



6 Larchfield Gardens

, Wishaw, ML2 8TS

Offers over £134,000

CLOSING DATE SET! FRIDAY 18TH MARCH AT NOON

Rarely available, an outstanding opportunity to purchase a spacious semi detached bungalow, within a preferred cul-de-sac setting and in a highly sought after residential location within Branchalwood Wishaw.

Internal viewing is a must to appreciate the style of accommodation on offer.

The accommodation comprises large lounge, dining room, fitted kitchen, two double bedrooms and shower room

Further benefits include double glazing, gas central heating, landscaped mature gardens to front, side and rear with driveway to the side of the property leading to a garage.

EPC D.

Larchfield Gardens is situated minutes from Wishaw Town Centre where all day-to-day requirements can be catered for including all shopping, schooling and transport links. For the commuter the nearby M74 & M8 motorway networks allow for fast and easy access to Glasgow, Edinburgh and all points beyond.

- Cul-de-sac sited
- Two double bedrooms
- Modern fitted kitchen
- Lovely landscaped private gardens
- Garage
- Gas Central Heating
- Double Glazing

Viewing

Please contact our Pomphreys Properties Ltd Office on 01698373365 if you wish to arrange a viewing appointment for this property or require further information.



2



1

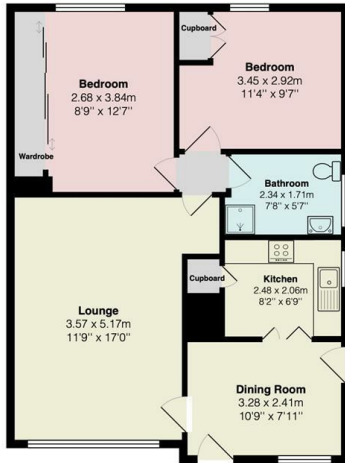


1



Floor Plan

6 Larchfield Garden, Wishaw



Ground Floor

Total Area: 64.7 m² ... 697 ft²

All measurements are approximate and for display purposes only

Area Map



Energy Efficiency Graph



These particulars, whilst believed to be accurate are set out as a general outline only for guidance and do not constitute any part of an offer or contract. Intending purchasers should not rely on them as statements of representation of fact, but must satisfy themselves by inspection or otherwise as to their accuracy. No person in this firm's employment has the authority to make or give any representation or warranty in respect of the property.