



9 Shield Drive

, Larkhall, ML9 2TJ

Offers over £134,000

A stunning mid terraced villa located in a highly popular residential area of Larkhall. Internal viewing is a must to appreciate the size, style and quality of accommodation on offer.

Upkept to the highest of standards by the present owners, the accommodation comprises, on the lower level, bright welcoming reception hallway, large lounge with patio doors overlooking and offering access to the rear garden and fabulous fitted modern kitchen with integrated hob, cooker hood and double oven.

On the upper level are two bedrooms and immaculate bathroom.

Further benefiting from Double Glazing, Gas Central Heating, private landscaped enclosed rear having a paved patio area perfect for entertaining and front providing off road parking.

EPC C

Larkhall has a variety of amenities including a busy high street, primary and secondary schooling, golf course, and leisure facilities. The town is serviced by train with frequent routes throughout the central belt. Quick access can also be gained to the motorway making the property ideal for those commuting throughout Scotland.

Viewing

Please contact our Pomphreys Properties Ltd Office on 01698373365 if you wish to arrange a viewing appointment for this property or require further information.

- Stunning Property!
- Internal viewing a must
- Fitted modern kitchen
- Large Lounge with patio doors to rear
- Double Glazing
- Gas Central Heating
- Private landscaped rear garden
- Parking to front



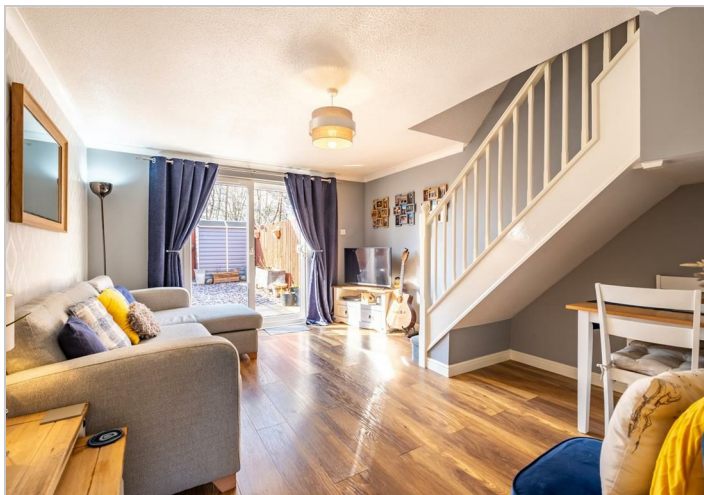
Floor Plan



Area Map



Energy Efficiency Graph



These particulars, whilst believed to be accurate are set out as a general outline only for guidance and do not constitute any part of an offer or contract. Intending purchasers should not rely on them as statements of representation of fact, but must satisfy themselves by inspection or otherwise as to their accuracy. No person in this firm's employment has the authority to make or give any representation or warranty in respect of the property.