



28 Meadowfield Place

Newmains, Wishaw, ML2 9QH

Offers over £58,000

NEW TO THE MARKET!!

A spacious upper flat set within a small and quiet cul-de-sac, in the sought after Bonkle area of Wishaw.

Comprising entrance hall, large bright lounge, fitted kitchen with lovely rear views, 2 double bedrooms, both with fitted storage and bathroom.

Further benefits include double glazing, gas central heating and a private rear garden.

Meadowfield Place is situated a short walk to Newmains centre and also a short drive from Wishaw town centre with its many amenities and is ideally situated for commuting to Glasgow, Edinburgh and the central belt via both the M8 and M74 motorway networks.

EPC D

- Upper Flat with lovely rear views
- **CLOSING DATE WED 18TH MAY AT NOON**
- double glazing
- gas central heating
- private rear garden

Viewing

Please contact our Pomphreys Properties Ltd Office on 01698373365 if you wish to arrange a viewing appointment for this property or require further information.



2



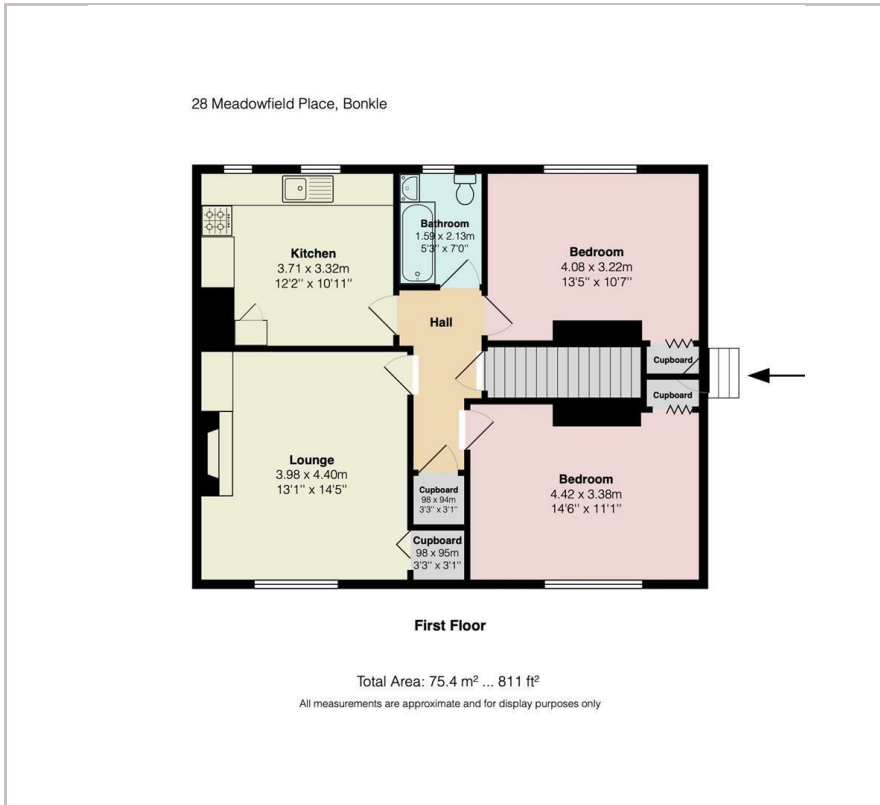
1



1



Floor Plan



Area Map



Energy Efficiency Graph



These particulars, whilst believed to be accurate are set out as a general outline only for guidance and do not constitute any part of an offer or contract. Intending purchasers should not rely on them as statements of representation of fact, but must satisfy themselves by inspection or otherwise as to their accuracy. No person in this firm's employment has the authority to make or give any representation or warranty in respect of the property.