



59 Lomond Drive

Wishaw ML2 0JR

Offers over £113,000

CLOSING DATE SET WEDNESDAY 25th MAY AT NOON!!

A stunning and extended mid terraced property, spacious and immaculate throughout.

The impressive accommodation provides generously proportioned rooms formed over two levels and comprises on the ground floor, entrance hall, large lounge, dining room, fabulous fitted kitchen and cloakroom/wc. On the upper level are three bedrooms and family bathroom.

Further benefits include double glazing, gas central heating, monoblocked driveway to front, providing ample off street parking, landscaped enclosed rear garden, lovely summer house and storage facilities under the rear extension

The property is situated close to local shops, amenities and schools. Wishaw town centre and railway station are a few minutes away and for those commuting by car there is easy access to both the M8 and M74 motorway networks.

EPC C

Viewing

Please contact our Pomphreys Properties Ltd Office on 01698373365 if you wish to arrange a viewing appointment for this property or require further information.

- CLOSING DATE WED 25th MAY AT NOON
- Lovely and spacious
- Fantastic dining kitchen
- Modern and immaculate
- Three great sized bedrooms
- Parking to front
- Summer House
- Landscaped rear garden



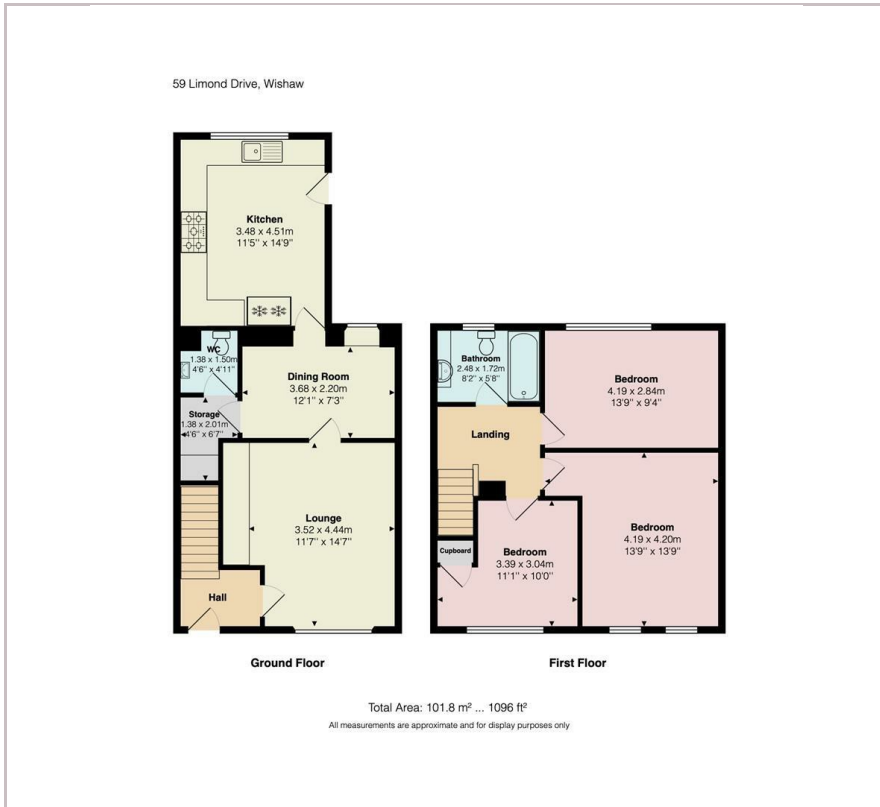
2



2



Floor Plan



Area Map



Energy Efficiency Graph



These particulars, whilst believed to be accurate are set out as a general outline only for guidance and do not constitute any part of an offer or contract. Intending purchasers should not rely on them as statements of representation of fact, but must satisfy themselves by inspection or otherwise as to their accuracy. No person in this firm's employment has the authority to make or give any representation or warranty in respect of the property.