



151 Waverley Drive

, Wishaw, ML2 7DW

Offers over £74,500

NEW TO THE MARKET!

Rarely available and situated in a fantastic area, freshly decorated and newly carpeted throughout this lovely bright ground floor flat must be internally viewed!

The accommodation comprises entrance hall, large lounge, fitted dining modern kitchen with integrated oven hob, cooker hood washing machine and fridge freezer, 2 double bedrooms and immaculate shower room.

Further benefits include double glazing, gas central heating, side landscaped garden with decked area and garage along with a communal rear garden

Waverley Drive is situated a few minutes walk from Wishaw Town Centre where all day-to-day requirements can be catered for including all shops, schooling, recreational and leisure pursuits. For the commuter, there are excellent public transport links to Glasgow, Edinburgh and all points beyond.

EPC C

Viewing

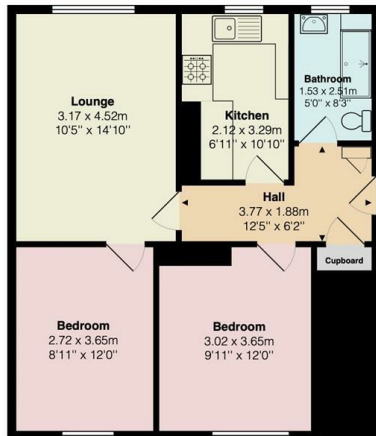
Please contact our Pomphreys Properties Ltd Office on 01698373365 if you wish to arrange a viewing appointment for this property or require further information.

- Redecorated throughout
- newly carpeted
- Immaculate lower flat
- Fabulous location
- Modern Kitchen with all integrated appliances
- Side landscaped garden
- communal rear
- Garage



Floor Plan

151 Waverley Drive, Wishaw



Ground Floor

Total Area: 54.7 m² ... 589 ft²

All measurements are approximate and for display purposes only

Area Map



Energy Efficiency Graph



These particulars, whilst believed to be accurate are set out as a general outline only for guidance and do not constitute any part of an offer or contract. Intending purchasers should not rely on them as statements of representation of fact, but must satisfy themselves by inspection or otherwise as to their accuracy. No person in this firm's employment has the authority to make or give any representation or warranty in respect of the property.