



## 9 Princess Square

Newmains, Wishaw, ML2 9DP

### Offers over £93,000

#### NEW TO THE MARKET!

A stunning mid terraced villa, immaculate and extremely well presented, early internal viewing is strongly advised!

The spacious and bright accommodation comprises reception hallway, large lounge, fab dining kitchen with integrated oven hob and cooker hood, 2 double bedrooms (master with fitted wardrobes) and immaculate modern shower room.

Further benefits include double glazing, gas central heating, front garden and landscaped enclosed rear garden with ample space for off street parking.

Princess Square is situated a short distance to Newmains centre and also a short drive from Wishaw town centre with its many amenities and is ideally situated for commuting to Glasgow, Edinburgh and the central belt via both the M8 and M74 motorway networks.

EPC C

#### Viewing

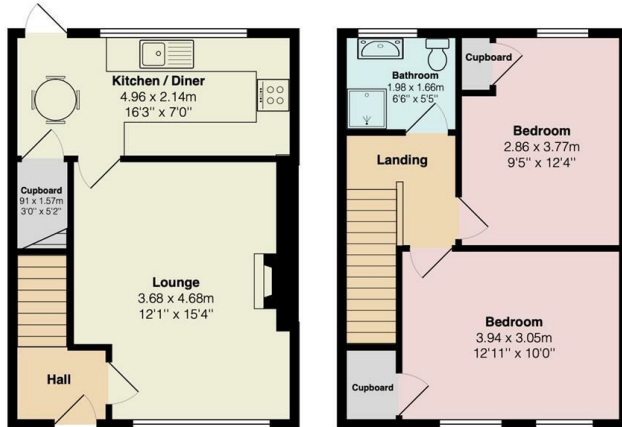
Please contact our Pomphreys Properties Ltd Office on 01698373365 if you wish to arrange a viewing appointment for this property or require further information.

- Stunning Mid Terraced Villa
- Modern Dining Kitchen
- Two Double Bedrooms
- Immaculate Shower Room
- Landscaped gardens to front and rear
- Double Glazing
- Gas Central Heating
- Enclosed Rear with Ample Space for Parking



## Floor Plan

9 Princess Square, Newmains



Ground Floor

First Floor

Total Area: 68.0 m<sup>2</sup> ... 732 ft<sup>2</sup>

All measurements are approximate and for display purposes only

## Area Map



## Energy Efficiency Graph



These particulars, whilst believed to be accurate are set out as a general outline only for guidance and do not constitute any part of an offer or contract. Intending purchasers should not rely on them as statements of representation of fact, but must satisfy themselves by inspection or otherwise as to their accuracy. No person in this firm's employment has the authority to make or give any representation or warranty in respect of the property.