



15 Hillfoot Gardens

, Wishaw, ML2 8TP

Offers over £199,000

UNEXPECTEDLY BACK ON MARKET!

Rarely available, an outstanding opportunity to purchase a spacious detached bungalow, within a preferred cul-de-sac setting and in a highly sought after residential location within Branchalwood Wishaw.

Internal viewing is a must to appreciate the size and style of accommodation on offer here.

The substantial accommodation comprises entrance porch, large bright lounge open plan to dining room, fitted kitchen, conservatory, three double bedrooms and shower room.

Further benefits include double glazing, gas central heating, landscaped mature gardens to front and rear with a long driveway to the side of the property leading to the garage.

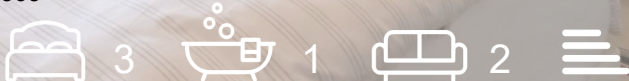
EPC D.

Hillfoot Gardens is situated minutes from Wishaw Town Centre where all day-to-day requirements can be catered for including all shopping, schooling and transport links. For the commuter the nearby M74 & M8 motorway networks allow for fast and easy access to Glasgow, Edinburgh and all points beyond.

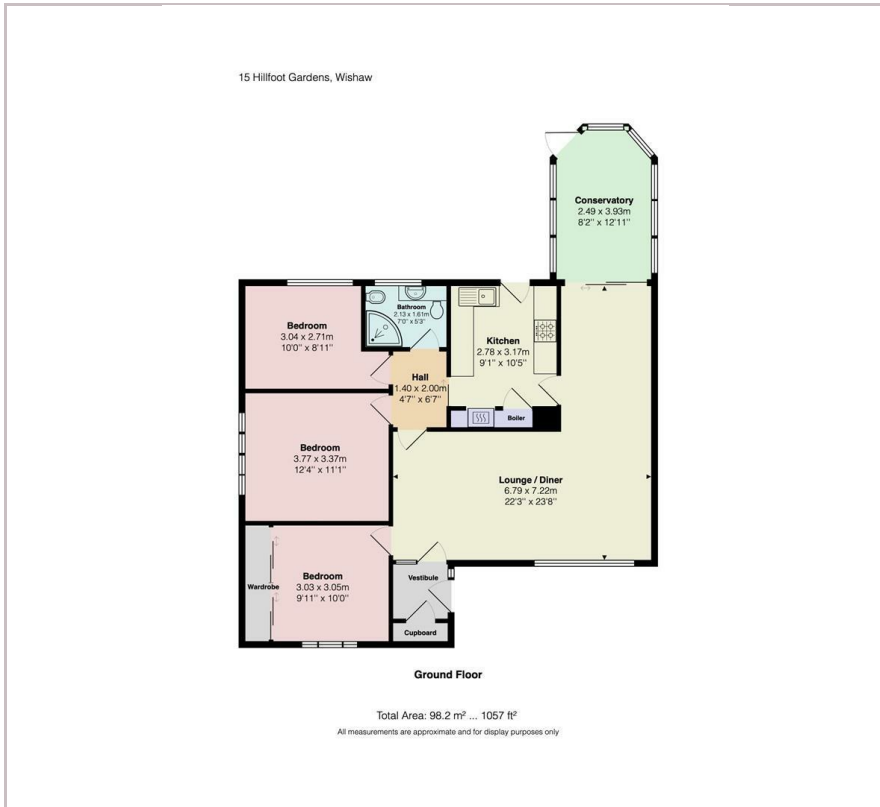
- DETACHED BUNGALOW
- CUL-DE-SAC SITED
- THREE BEDROOMS
- LARGE LOUNGE AND DINING AREA
- CONSERVATORY
- LANDSCAPED GROUNDS
- LONGE DRIVEWAY AND GARAGE

Viewing

Please contact our Pomphreys Properties Ltd Office on 01698373365 if you wish to arrange a viewing appointment for this property or require further information.



Floor Plan



Area Map



Energy Efficiency Graph



These particulars, whilst believed to be accurate are set out as a general outline only for guidance and do not constitute any part of an offer or contract. Intending purchasers should not rely on them as statements of representation of fact, but must satisfy themselves by inspection or otherwise as to their accuracy. No person in this firm's employment has the authority to make or give any representation or warranty in respect of the property.