



## 138 Cambusnethan Street

, Wishaw, ML2 8NJ

**Offers over £43,000**

An excellent buy to let or first time buyers property!

Situated in a central area within Cambusnethan, a spacious ground floor apartment in need of a slight degree of internal modernisation.

Accommodation comprises entrance hall, large lounge, fitted kitchen, double bedroom and bathroom.

Double Glazing. Gas Central Heating. Communal Gardens. Ample parking to front.  
EPC D.

A selection of shops and amenities, where all day-to-day requirements can be catered for, are found in Cambusnethan and nearby Newmains, with Wishaw Town Centre only a few minutes away. Further shops, schooling, recreational pursuits and various public transport links are all to hand. For the commuter the M8 and M74 motorway networks allow for fast and easy access to Glasgow, Edinburgh and all points beyond.

- Excellent Buy to Let Opportunity
- Ground Floor Apartment
- Communal Grounds
- Ample Parking
- Large Lounge
- Double Bedroom

### Viewing

Please contact our Pomphreys Properties Ltd Office on 01698373365 if you wish to arrange a viewing appointment for this property or require further information.



1



1

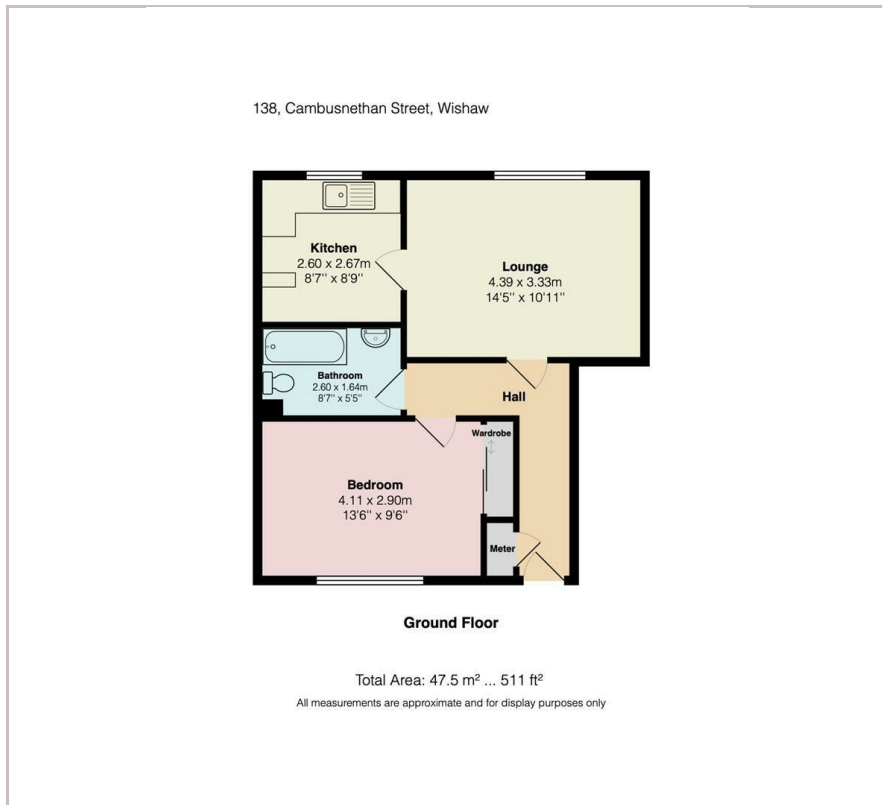


1





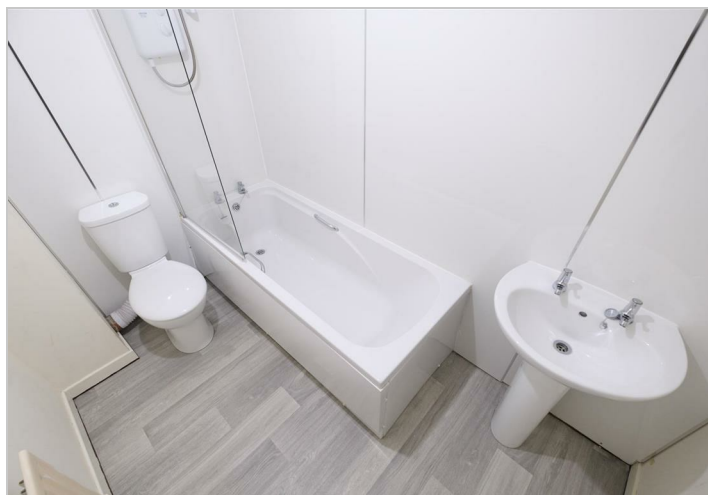
## Floor Plan



## Area Map



## Energy Efficiency Graph



These particulars, whilst believed to be accurate are set out as a general outline only for guidance and do not constitute any part of an offer or contract. Intending purchasers should not rely on them as statements of representation of fact, but must satisfy themselves by inspection or otherwise as to their accuracy. No person in this firm's employment has the authority to make or give any representation or warranty in respect of the property.