



30 Gateside Walk

Lesmahagow, Lesmahagow, ML11 0BP

Offers over £68,000

NEW TO THE MARKET!

A spacious mid terraced villa located in a popular residential area of Lesmahagow.

The accommodation comprises entrance hall, large lounge, fitted kitchen, 2 double bedrooms and bathroom.

Further benefits include double glazing, electric white meter central heating and private enclosed gardens to front and rear.

EPC E

Lesmahagow is a small town providing everyday shopping facilities including a Tesco store and good schooling. The area offers a wide variety of parks, sports facilities and several pubs and restaurants whilst for commuters, the road network links with the M74 motorway both north and southbound and to the M8 motorway linking Glasgow and beyond

- GREAT SIZED MID TERRACED PROPERTY
- TWO DOUBLE BEDROOMS
- GARDENS TO FRONT AND REAR
- EXCELLENT PRICING
- LARGE LOUNGE
- DOUBLE GLAZING
- ELECTRIC HEATING

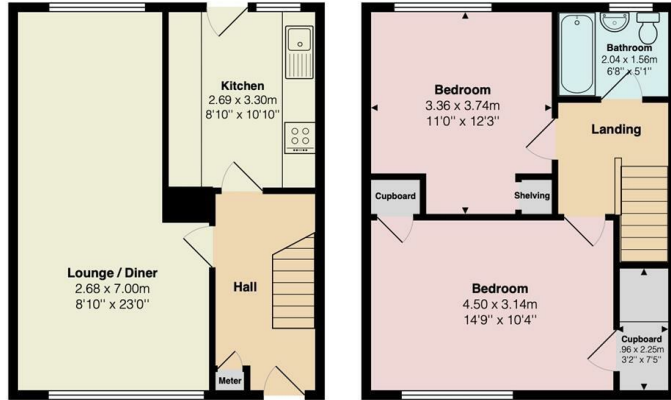
Viewing

Please contact our Pomphreys Properties Ltd Office on 01698373365 if you wish to arrange a viewing appointment for this property or require further information.



Floor Plan

30 Gateside Walk, Lesmahagow



Ground Floor

First Floor

Total Area: 77.3 m² ... 832 ft²

All measurements are approximate and for display purposes only



Area Map



Energy Efficiency Graph



These particulars, whilst believed to be accurate are set out as a general outline only for guidance and do not constitute any part of an offer or contract. Intending purchasers should not rely on them as statements of representation of fact, but must satisfy themselves by inspection or otherwise as to their accuracy. No person in this firm's employment has the authority to make or give any representation or warranty in respect of the property.