



47 Moss Road

, Wishaw, ML2 8PU

Fixed asking price £109,000

NEW FIXED ASKING PRICE!

This rarely available and freshly decorated mid terraced villa is situated within a popular and sought after residential estate.

The accommodation comprises entrance porch, large bright lounge, fitted kitchen, two double bedrooms and bathroom.

The property is heated by a gas fired central heating system, is double glazed throughout and has landscaped garden areas to front and an enclosed rear. Allocated parking space.

The property is ideally located a few minutes from Wishaw town centre where all day-to-day requirements can be catered for, including various public transport links, sports facilities and schooling. For the commuter, the M8 and M74 motorway networks allow fast, easy access to Glasgow, Edinburgh and all points beyond EPC C

- Mid Terraced Villa
- Freshly decorated throughout
- Two double bedrooms
- private rear garden

Viewing

Please contact our Pomphreys Properties Ltd Office on 01698373365 if you wish to arrange a viewing appointment for this property or require further information.



2



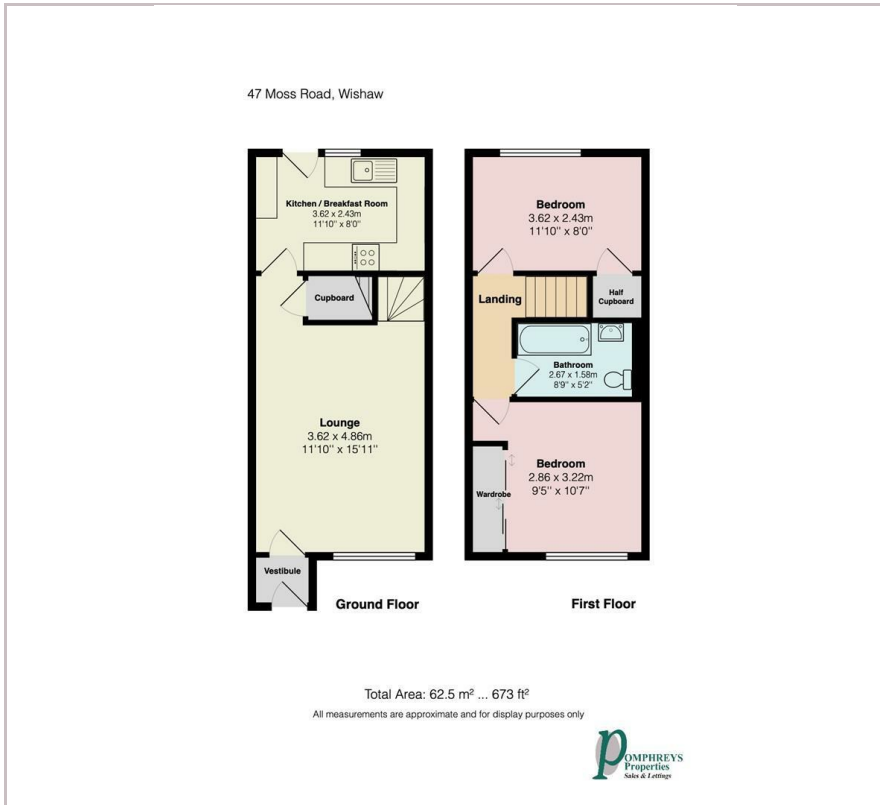
1



1



Floor Plan



Area Map



Energy Efficiency Graph



These particulars, whilst believed to be accurate are set out as a general outline only for guidance and do not constitute any part of an offer or contract. Intending purchasers should not rely on them as statements of representation of fact, but must satisfy themselves by inspection or otherwise as to their accuracy. No person in this firm's employment has the authority to make or give any representation or warranty in respect of the property.