



## 489 Cambusnethan Street

, Wishaw, ML2 8QA

**Fixed asking price £188,000**

A stunning and very impressive three bedroom end terraced villa. Upkept to the highest standards throughout, Pomphreys Properties are delighted to present to the market this spacious and gorgeous family villa which offers very generous accommodation with a well proportioned and flexible layout, while being finished to an extremely high standard throughout with fresh neutral decor and quality floor coverings.

The hugely deceptive and extremely spacious accommodation is formed over two levels and comprises, on the ground floor, reception hallway with stairway providing access to the upper level, large formal lounge, dining room, fitted dining kitchen with a host of appliances and French Doors overlooking and offering access to the rear garden, a large double bedroom with gorgeous ensuite facilities and contemporary family bathroom.

On the upper level are a further two spacious bedrooms with velux windows offering lots of natural light to make the rooms even more spacious and airy. One bedroom has en suite facilities and the other with space to do so.

Externally the property boasts landscaped gardens to front and rear, with driveway to the side offering access to the garage and provides ample off road parking. The large private rear landscaped garden boasts an outside office with separate secure access from the main house

Cambusnethan Street is situated central and a short drive from Wishaw town centre with its many amenities and is ideally situated for commuting to Glasgow, Edinburgh and the central belt via both the M8 and M74 motorway networks.

EPC C

### Viewing

Please contact our Pomphreys Properties Ltd Office on 01698373365 if you wish to arrange a viewing appointment for this property or require further information.

- A Stunning End Terraced Villa
- Three large bedroom (two with en suite)
- Beautiful Lounge
- Fitted Modern kitchen with French Doors
- Large Landscaped Rear Garden
- Formal Dining Room
- Separate Office
- Driveway
- Garage



3



3

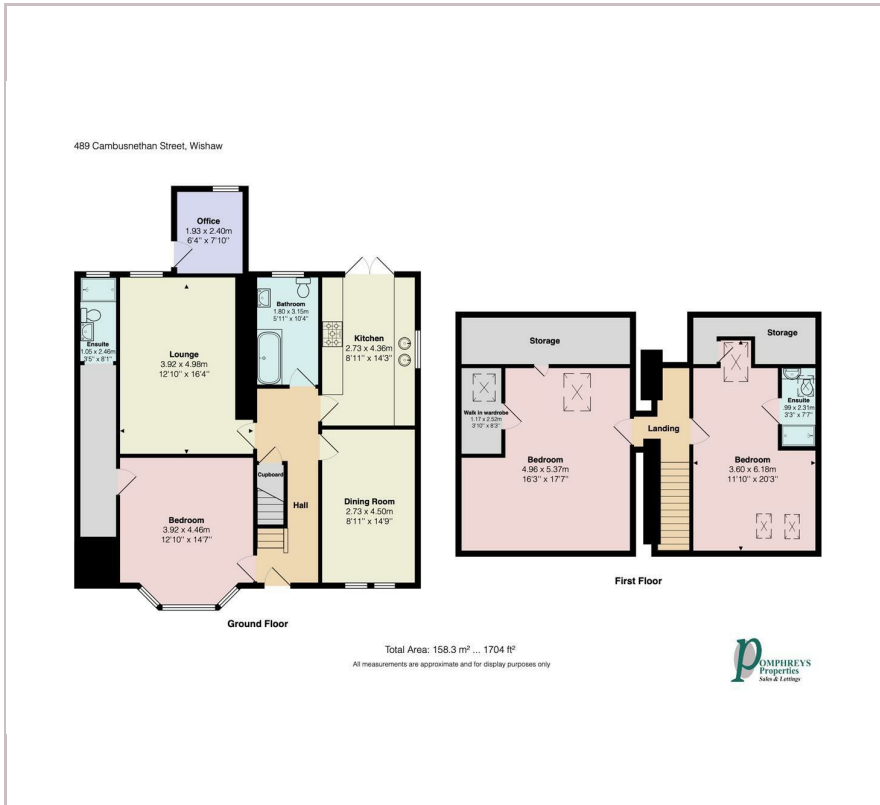


2





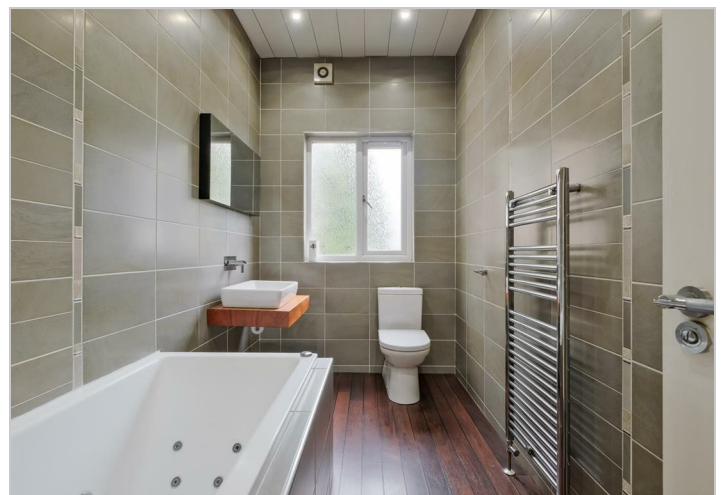
## Floor Plan



## Area Map



## Energy Efficiency Graph



These particulars, whilst believed to be accurate are set out as a general outline only for guidance and do not constitute any part of an offer or contract. Intending purchasers should not rely on them as statements of representation of fact, but must satisfy themselves by inspection or otherwise as to their accuracy. No person in this firm's employment has the authority to make or give any representation or warranty in respect of the property.