



RESIDENCE

29 Avonbridge Drive, Hamilton, ML3 7EG

www.residenceestateagents.co.uk



Viewing by appointment with Residence Uddingston

T: 01698 444222 | E: uddingston@residenceestateagents.co.uk | A: 61-63 Main Street, Uddingston, G71 7EP





3 Bedrooms | 1 Public Rooms | 2 Bathrooms

Set quietly towards the foot of this popular development and enjoying a favoured elevated ground floor position is this large three bedroom apartment.

The interior of this sizeable home is finished with contemporary decor throughout with quality floor coverings throughout including Amitico flooring.

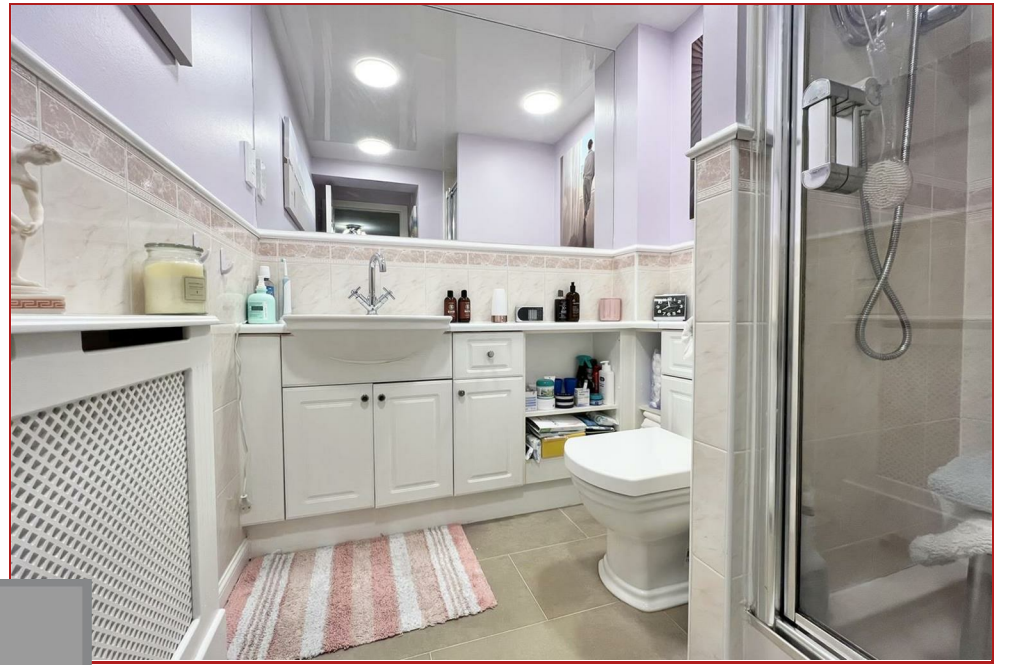
The accommodation extends to large entrance hall with generous storage, sizeable lounge, modern kitchen, three well-proportioned bedrooms with principal en-suite shower room, with bedroom three currently being utilised as a home office.

Features of the apartment include gas central heating, double glazing, CCTV and security controlled entry system, ample private parking and additional visitor parking. The apartment enjoys tranquil woodland views and is only a short distance from the centre of Hamilton.



Avonbridge Drive is located within the highly regarded Barncluith district of Hamilton which is particularly convenient to the town centre and its amenities. Hamilton is home to a wide variety of restaurants, bistros and pubs as well as excellent shopping facilities and sports amenities including golf courses, swimming baths, gyms and parks. There are several highly regarded schools as well as the nearby Hamilton College, and for those commuting by public transport there are regular bus and train links to the surrounding towns including East Kilbride, Motherwell, Glasgow and Edinburgh. Also, the nearby M74 motorway provides excellent road links throughout west central Scotland.

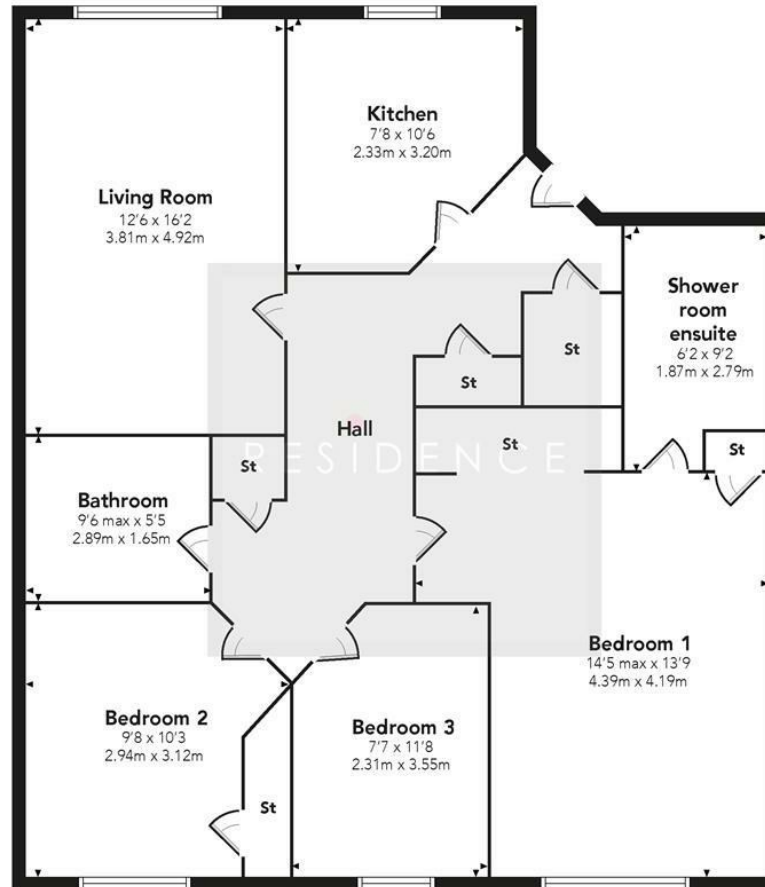
893.41 sq ft | EER = C



RESIDENCE



Avonbridge Drive



Floor Plan measurements are approximate and are for illustrative purposes only. While we do not doubt the floor plans accuracy, we make no guarantee, warranty or representation as to the accuracy and completeness of the floor plan. You or your advisors should conduct a careful, independent investigation of the property to determine to your satisfaction as to the suitability of the property for your space requirements.

Produced by Plush Plans Ltd

We believe these details to be accurate; however, they do not form any part of a contract. Fixtures and fittings are not included unless specified in the enclosed. Photographs are for general information and it must not be inferred that any item is included for sale with the property. All distances and measurements are approximate. Floorplans may not be to scale and are for illustration purposes only.