

Simple Approach



**51 Colonsay Street, Perth  
Perthshire PH1 3TU**

**Offers over £134,950**

Simple Approach are pleased to bring to the market this spacious three bedroom mid-terraced house in the highly desirable area of North Muirton. This great home is set over two floors and comprising a modern dining kitchen with access to the rear garden, a bright and spacious lounge with large picture window all on the ground floor level. Upstairs there are the three double bedrooms and a modern family bathroom. Boasting features such as ample on street parking, gas central heating and double glazing, this excellent property lends itself to a wide range of purchasers and would be the ideal home for any first time buyer, investor or growing family looking for a well-located property in move-in condition throughout. The property is ideally placed to take advantage of all the amenities close to hand such as the primary school, local shops and the Inveralmond Industrial Estate minutes away. Viewing is absolutely essential to appreciate the overall space and superb location on offer.

### Lounge

15'10" x 11'7" (4.83 x 3.55)

### Kitchen

9'8" x 14'7" (2.97 x 4.46)

### Master Bedroom

10'11" x 10'4" (3.34 x 3.16)

### Bedroom Two

9'4" x 13'5" (2.85 x 4.09)

### Bedroom Three

8'4" x 8'4" (2.56 x 2.56)

### Family Bathroom

6'8" x 5'3" (2.05 x 1.62)

### External

Externally this home has easily maintained garden

grounds to the rear which are enclosed for safety and privacy making this ideal for both children and pets. Mainly laid to gravel stones perfect for entertaining in the summer months as well as plenty of residential parking readily available where needed.

### Location

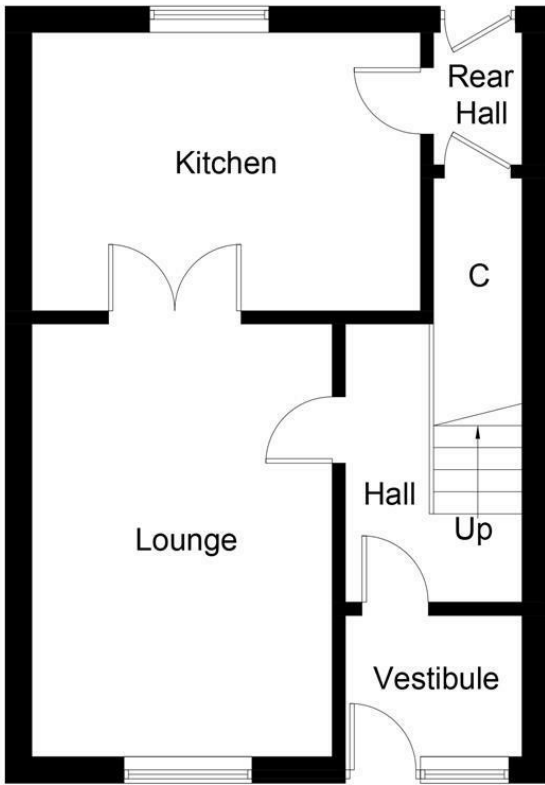
This property could not be better situated for its locality to nearby amenities such as a shop, a reputable primary school, The Grammar School and St. Johns to name just a few. There are regular bus routes nearby for quick access to and from Perth City Centre and the Inveralmond Roundabout is just a few minutes drive away for quick routes into Inverness, Edinburgh, Dundee and the Central Belt, ideal for the commuter.



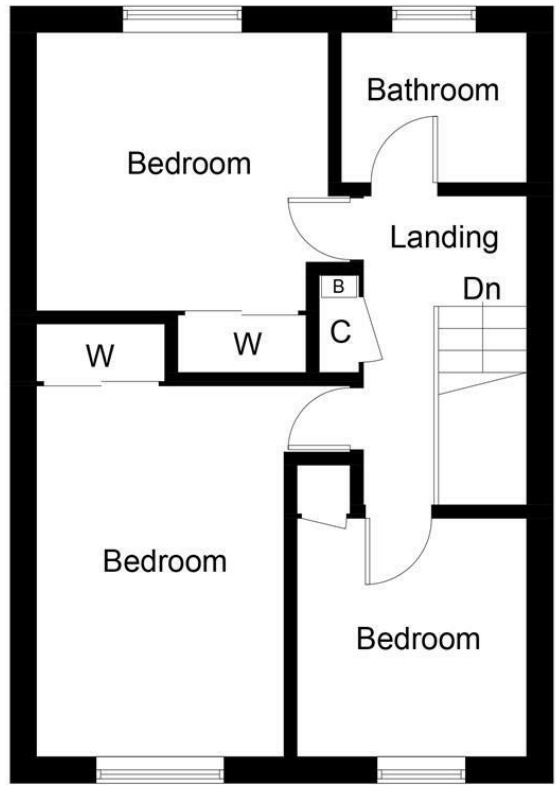


- Gas Central Heating
- Close To All Amenities
- 3 Double Bedrooms
- Double Glazing
- North Muirton Location Of Perth
- Great Residential Location
- Move In Condition





Ground Floor



First Floor



Energy Efficiency Rating		
	Current	Potential
Very energy efficient - lower running costs		
(92 plus) <b>A</b>		<b>89</b>
(81-91) <b>B</b>		
(69-80) <b>C</b>	<b>72</b>	
(55-68) <b>D</b>		
(39-54) <b>E</b>		
(21-38) <b>F</b>		
(1-20) <b>G</b>		
Not energy efficient - higher running costs		
<b>Scotland</b>		EU Directive 2002/91/EC
Environmental Impact (CO <sub>2</sub> ) Rating		
	Current	Potential
Very environmentally friendly - lower CO <sub>2</sub> emissions		
(92 plus) <b>A</b>		<b>88</b>
(81-91) <b>B</b>		
(69-80) <b>C</b>	<b>71</b>	
(55-68) <b>D</b>		
(39-54) <b>E</b>		
(21-38) <b>F</b>		
(1-20) <b>G</b>		
Not environmentally friendly - higher CO <sub>2</sub> emissions		
<b>Scotland</b>		EU Directive 2002/91/EC