



---

# The Craigellachie, Pitilie View, Aberfeldy

Offers Over £499,000 Freehold

LAST 2 HOUSES REMAINING

---

## Description

In one of the most beautiful locations in highland Perthshire with truly magnificent views over looking Aberfeldy towards Schiehallion and the mountains and hills of Glen Lyon and Rannoch.

This house is one of four substantial new houses in a stunning rural location at Pitilie View which is just over 1 mile to the south of the popular and charming town of Aberfeldy.

The house is ideally placed for easy access to both North and South via the A9 at Ballinluig (10 miles). There is a train station at Pitlochry (14 miles) which has frequent services to Inverness, Edinburgh, Glasgow and London (including the sleeper).

Only a short walk from the house are The Birks of Aberfeldy which is a woodland gorge made famous by the poet Robert Burns, which provides scenic walks up to the Falls of Moness, where there are spectacular views.

\*The photographs are for illustrative purposes only, they show the Dewar House Type (show home).\*

See video tour on these 4 stunning houses and the surrounding area on YouTube

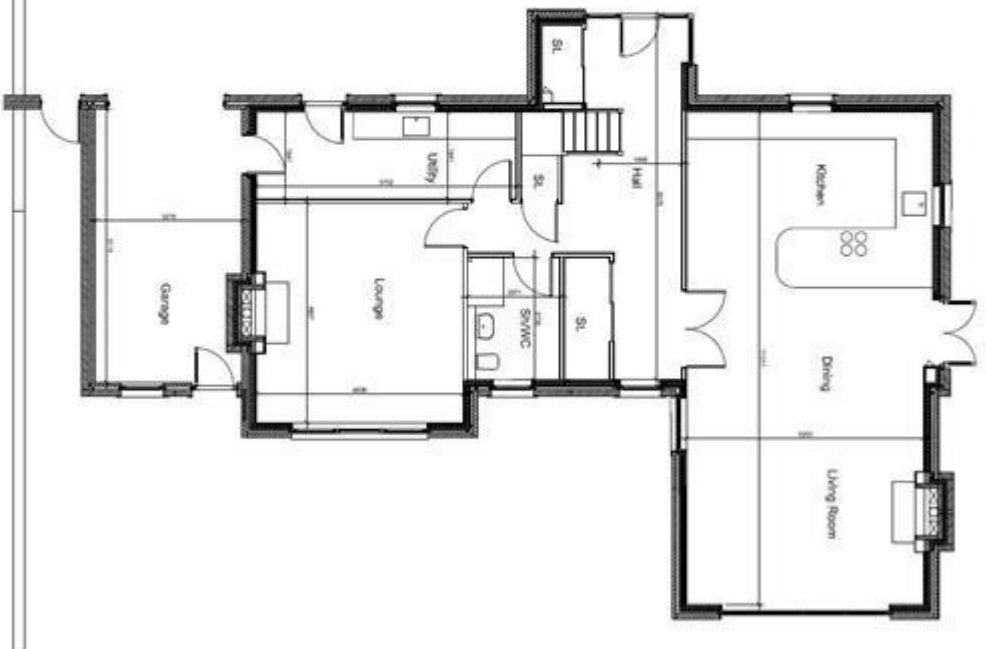
<https://www.youtube.com/embed/KE6pZxKwdUg>

## Tenure

Freehold







11 HOUSE 1 - ground floor plan  
13m 8 x 14



12 House 1 - first floor plan  
13m 8 x 14



Viewing by appointment only

[Ballantynes - Perth Office](#)

28, York Place, Perth PH2 8EH

Tel: 01738 441 825 Email: [perth@ballantynes.uk.com](mailto:perth@ballantynes.uk.com) Website: <http://www.ballantynes.uk.com>