



Super Stylish Two Bedroom Flat
14 Bank Street, Hillhead, Glasgow, G12 8JQ

IVY

Super Stylish Two Bedroom Flat

14 Bank Street, Hillhead, Glasgow, G12 8JQ



Description



Majestic and commanding upper townhouse conversion set in the leafy west end district of Hillhead with private garage/studio space. Locally there is a superb selection of cafes, restaurants [The new Paesano will be just a few minutes walk] delis and specialist shops together with Kelvinbridge Underground, regular buses on Great Western Road into town and further west and further leisure at Gibson Street, The Botanic Gardens and nearby Byres Road.

The accommodation comprises; reception hall with large storage cupboard, circa 350 sq ft formal lounge with superb period features and impressive 'working' period fireplace, spacious breakfasting kitchen, 2 excellent double bedrooms and to complete the layout there is a stylish 3 piece bathroom with over bath shower. To the rear there is a private garage or studio space which is a rarity in this sought after area. There is a communal and secure rear garden and a gateway to the access lane. This property will surprise and impress and we expect the private garage or studio space together with the spacious, original drawing room to set this property apart.

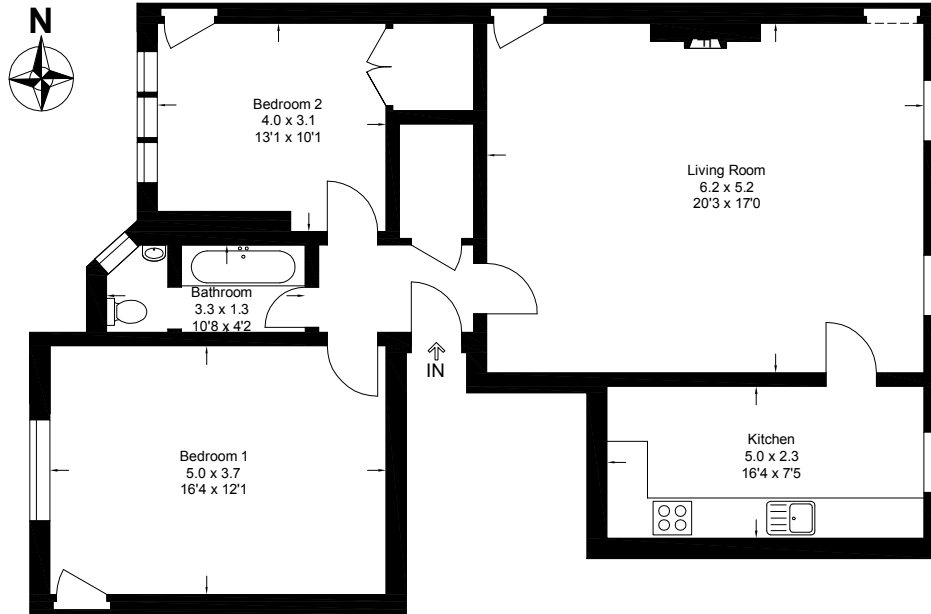
EER - Band C

Council Tax Band - Band D

Measurements

Living Room	20'3 x 17'0
Kitchen	16'4 x 7'5
Bedroom	16'4 x 12'1
Bedroom	13'1 x 10'1
Bathroom	10'8 x 4'2





This plan is for layout guidance only and is not drawn to scale. Whilst every care is taken in the preparation of this plan, please check all dimension and shapes before making any decision reliant upon them. All room dimensions taken through cupboard/wardrobes to wall surface where possible or to surfaces indicated by arrow heads. (ID 110927)
VistaBee © 2017

Sales 🏠 Letting 🏠 Sourcing 🏠 Investment 🏠

IVY Property Limited, 81 Lauderdale Gardens, Hyndland G12 9QU •

Tel: 0141 339 8935 • Fax: 0141 339 9301 • info@ivy-property.com • www.ivy-property.com

DISCLAIMER: Whilst we endeavour to make these particulars as accurate as possible, they do not form any part of any contract on offer, nor are they guaranteed. Measurements are approximate and in most cases are taken using a digital/sonic measuring device and are taken to the widest point. We have not tested the electricity, gas or water services or any appliances. Photographs are reproduced for general information and it must not be inferred that any item is included for sale with the property. If there is any part of this that you find misleading or simply wish clarification on any point, please contact our office immediately when we will endeavour to assist you in any way possible. This property is being sold in its present condition and no warranty will be given to any purchaser with regard to the existence or condition of the services or any heating or other system within the property. Any intending purchasers will require to accept the position as it exists since no testing of any services or systems can be allowed. No moveable items will be included in the sale.

