

# Findhorn

3 BEDROOM DETACHED BUNGALOW



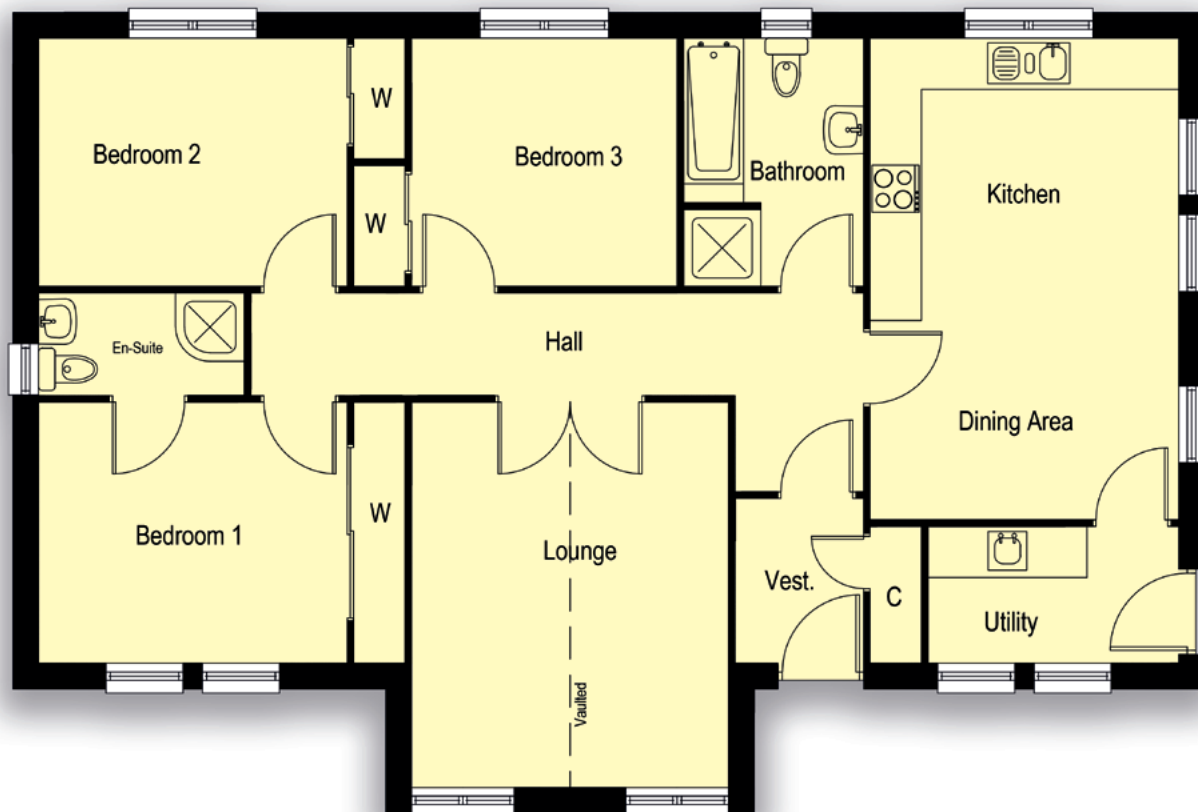
MEADOWVIEW

AS INDIVIDUAL AS YOU...



MorlichHomes

# Findhorn 3 BEDROOM DETACHED BUNGALOW



## Floor Plan

Lounge	3700mm x 4500mm 12'2" x 14'9"
Kitchen/Dining	3600mm x 5625mm 11'9" x 18'6"
Utility	2925mm x 1600mm 9'7" x 5'4"
Vestibule	1500mm x 1925mm 4'11" x 6'4"
Bedroom 1	3600mm x 3050mm 11'9" x 10'0"
Bedroom 2	3600mm x 2900mm 11'9" x 9'6"
Bedroom 3	3100mm x 2900mm 10'3" x 9'6"
Bathroom	2100mm x 2900mm 6'10" x 9'6"
En-Suite	2400mm x 1200mm 7'10" x 3'11"

Total Floor Area: 102.5m<sup>2</sup>

All measurements given above are approximate and intended as a guide only.

We are happy to alter, amend or extend any of our house styles to accommodate your individual requirements. The artists impressions are for guidance only please speak to our sales representative for guidance on exact design and specification for individual plots.