

Spey

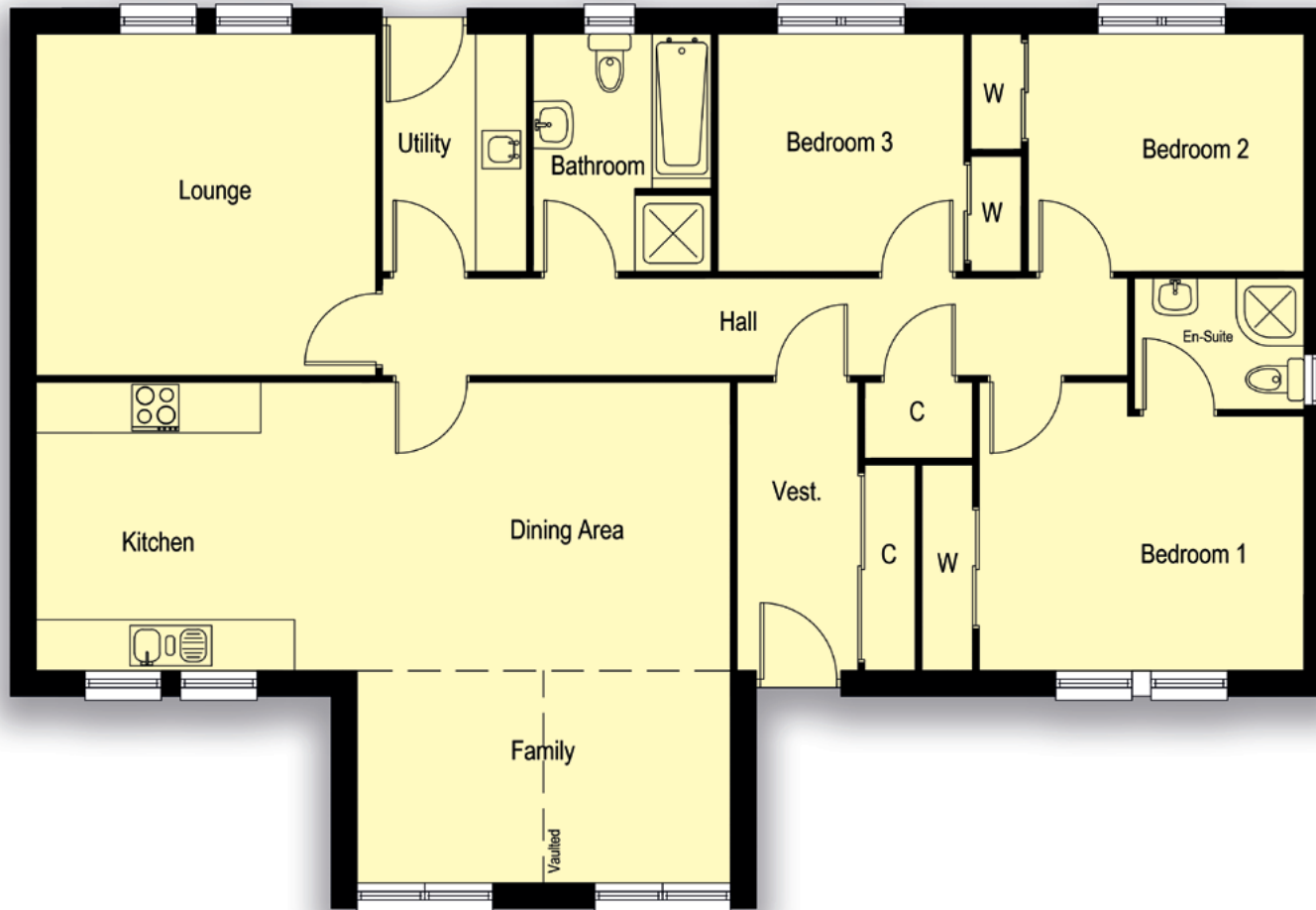
3 BEDROOM DETACHED BUNGALOW



MEADOWVIEW

AS INDIVIDUAL AS YOU...





Floor Plan

Lounge	4000mm x 4025mm 13'2" x 13'3"
Kitchen	3775mm x 3400mm 12'5" x 11'3"
Dining/Family	4400mm x 5900mm 14'6" x 19'4"
Utility	1700mm x 2800mm 5'7" x 9'3"
Bathroom	2100mm x 2800mm 6'10" x 9'3"
Vestibule	1425mm x 3400mm 4'8" x 11'2"
Bedroom 1	3825mm x 3000mm 12'7" x 9'10"
Bedroom 2	3250mm x 2800mm 10'9" x 9'3"
Bedroom 3	2900mm x 2800mm 9'6" x 9'3"
En-Suite	2000mm x 1550mm 6'6" x 5'2"

Total Floor Area: 122.9m²

All measurements given above are approximate and intended as a guide only.

We are happy to alter, amend or extend any of our house styles to accommodate your individual requirements. The artists impressions are for guidance only please speak to our sales representative for guidance on exact design and specification for individual plots.