

Deveron

3 BEDROOM DETACHED BUNGALOW

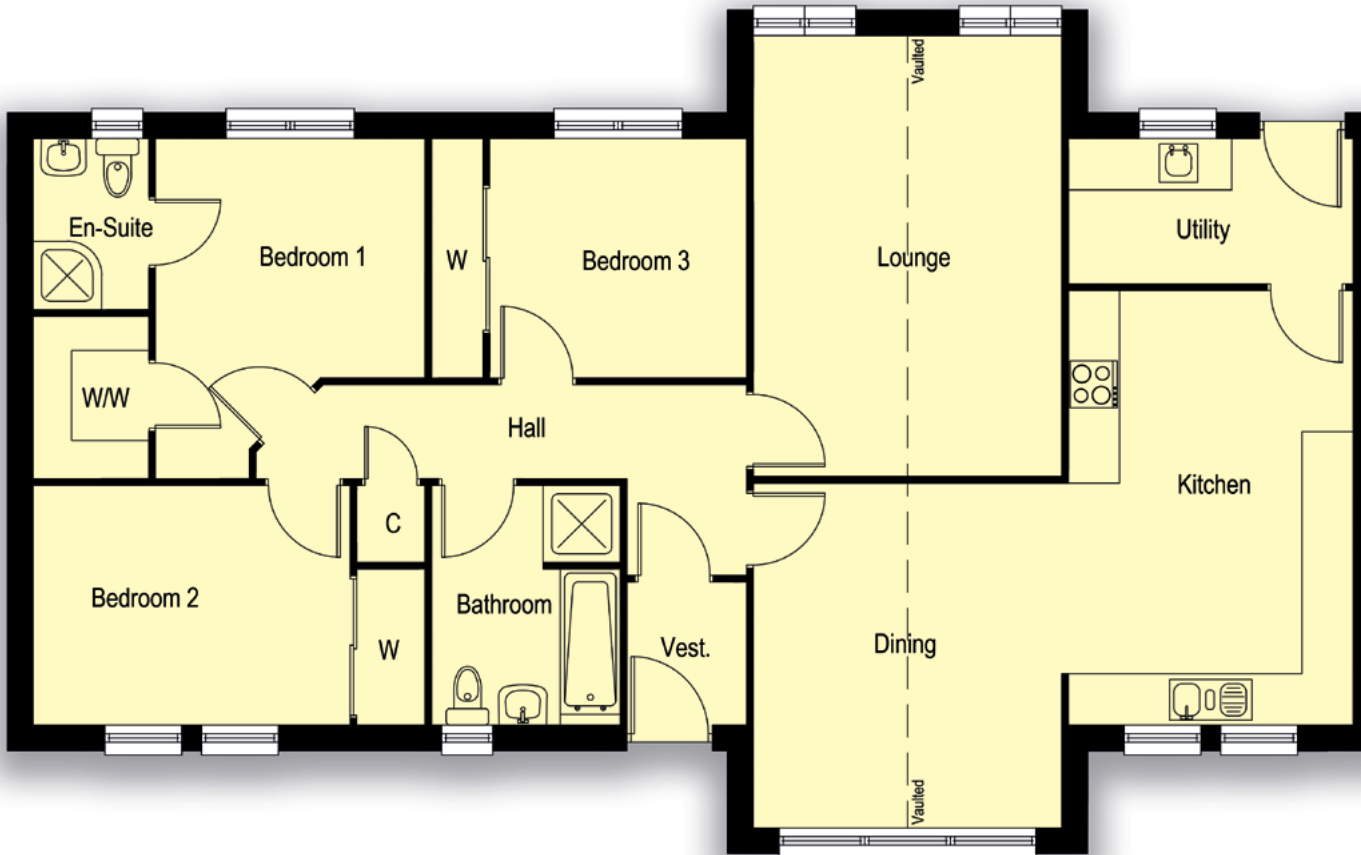


MEADOWVIEW

AS INDIVIDUAL AS YOU...



Deveron 3 BEDROOM DETACHED BUNGALOW



Floor Plan

Utility	3325mm x 1700mm 10'10" x 5'7"
Kitchen	3325mm x 5075mm 10'10" x 16'8"
Dining	3600mm x 4025mm 11'9" x 13'3"
Lounge	3600mm x 5050mm 11'9" x 16'7"
Vestibule	1400mm x 1625mm 4'7" x 5'4"
Bedroom 3	3000mm x 2800mm 9'10" x 9'3"
Bedroom 2	3700mm x 2800mm 12'2" x 9'3"
Bedroom 1	3150mm x 2800mm 10'4" x 9'3"
En-Suite	1350mm x 2000mm 4'5" x 6'6"
Bathroom	2200mm x 2800mm 7'3" x 9'3"
Walk in Wardrobe	1350mm x 1900mm 4'6" x 6'3"

Total Floor Area: 114m²

All measurements given above are approximate and intended as a guide only.

We are happy to alter, amend or extend any of our house styles to accommodate your individual requirements. The artists impressions are for guidance only please speak to our sales representative for guidance on exact design and specification for individual plots.