



**22 Beacons Court, Craws Nest Court, Anstruther,
KY10 3FP**



NEXT HOME™
ESTATE & LETTINGS AGENTS

Offers In Excess Of £149,000



Located in the small town of Anstruther, this luxury Retirement Living development is an ideal option for those looking to retire to the coast in Fife.

AREA

A charming coastal town, Anstruther is renowned for its beautiful harbour, attractive mix of shopping and of course, delicious fish and chips!

Originally a fishing village, this pretty town has a deep rooted history much of which is showcased at the Scottish Fisheries Museum, one of Anstruther's top attractions.

Another popular attraction for nature lovers is the Isle of May, which can be reached by ferry in the summer months from Anstruther Harbour. The island offers an abundance of wildlife both on land and in the surrounding waters, including various seabirds such as puffins and guillemots, plus sealife including seals, dolphins and even whales if you are very lucky!

McCarthy & Stone's beautiful new development is our first in Anstruther and is located just off Bankwell Road at Craws Nest Court.

Bus stops are located just outside of the development allowing easy access to the town centre and harbour, as well as to surrounding towns and villages.



SPECIFICATION

General

NHBC 10 year guarantee allows you to buy with confidence. Double glazing to keep you warm and ensure your bills stay low.

Walk in wardrobe in selected apartments so it's easy to keep everything organised and within reach.

Lever taps, which turn on and off easily.

Telephone and television point in living room and bedrooms.

Sky/Sky+ connection point in living room.

Kitchen

Fitted kitchen with integrated washer/dryer, fridge/freezer, oven and ceramic hob, laid out to make cooking easier.

Cooker hood to help keep your apartment fresh.

Stainless steel sink with hardwearing, easy to clean surface.

Shower room

En-suite shower room in all two bedroom apartments.

Shower fitted and tiled.

Fitted illuminated mirror.

Heated ladder towel rail.

Next Home Estate Agents

63 – 65 George Street,
Perth,
01738 44 43 42

1a James Square,
Crieff,
01764 65 00 44

211 High Street,
Auchterarder,
01764 66 36 66

41 – 43 Allan Street,
Blairgowrie,
01250 39 80 02

21 Atholl Road,
Pitlochry,
01796 54 80 14



Heating & finishes

Energy-efficient heating to keep you warm whilst being clean and economical.

Neutral décor to coordinate with your furnishings.

Oak veneered doors give your interior a quality feel.

Chrome door furniture for a stylish touch.

Safety & security

Door entry system which links to your TV, allowing you to see who's there before opening the door.

Smoke detector and intruder alarm to ensure your personal safety.

Illuminated light switches for bathroom and main bedroom so you can access them easily in the dark.

ROOM SIZES

LOUNGE

24' 0" x 11' 3" (7.32m x 3.43m)

KITCHEN

9' 10" x 7' 5" (3m x 2.26m)

BEDROOM

12' 10" x 9' 7" (3.91m x 2.92m)

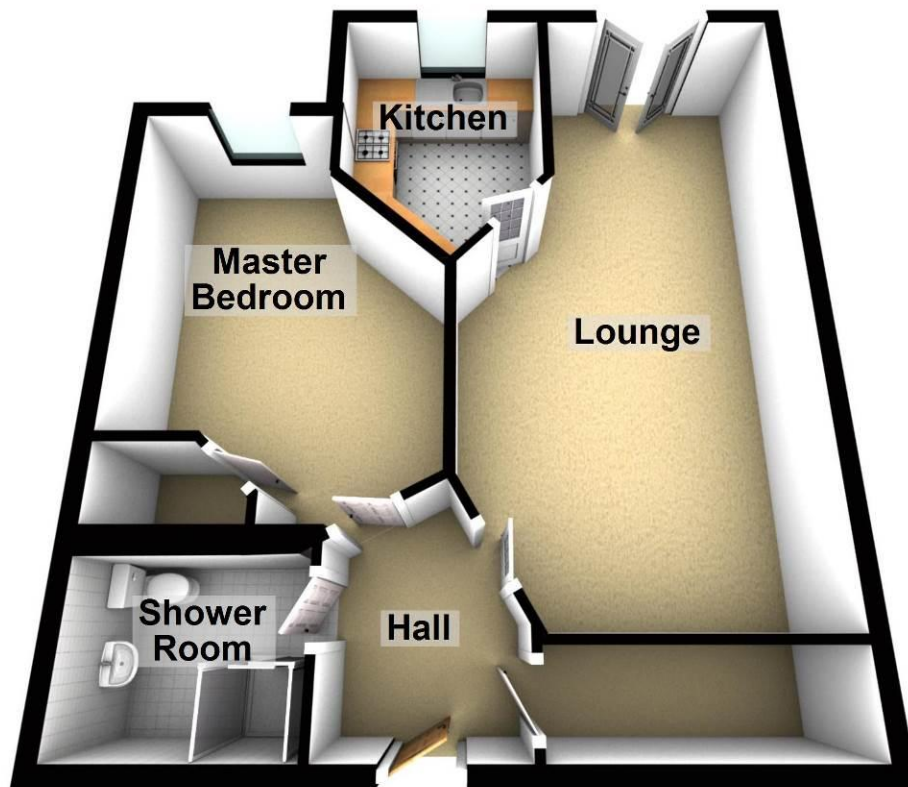
SHOWER ROOM

7' 3" x 6' 11" (2.21m x 2.11m)





Ground Floor



Valuation on your own property

Valuation on your own property: If you would like to know how much your property might achieve in today's market, we are pleased to offer a free market appraisal with no obligation. We are now available 7 days till 9pm - just call 01738 444342 to arrange an appointment.

www.nexthomeonline.co.uk

Next Home Estate Agents

63 – 65 George Street, Perth – 01738 44 43 42
41 – 43 Allan Street, Blairgowrie – 01796 54 80 14
21 Atholl Road, Pitlochry – 01796 54 80 14
1a James Square, Crieff – 01764 65 00 44
211 High Street, Auchterarder – 01764 66 36 66
Email: sales@nexthomeonline.co.uk

Please Note:

These particulars whilst believed to be accurate are set out as a general outline only for guidance and do not constitute any part of an offer or contract intending, purchasers should not rely on them as statements or representations of fact, but must satisfy themselves by inspection or otherwise as to their accuracy. No person in this firm's employment has the authority to make or give representation or warranty in respect of the property. All room sizes are approximate and for general guidance only. They cannot be relied upon for fitting carpets, furniture etc.