



RESIDENCE

91 Dovecastle Drive, Strathaven, ML10 6BJ

www.residencestateagents.co.uk



Viewing by appointment with Residence Strathaven

T: 01357 572222 | E: strathaven@residencestateagents.co.uk | A: 3 Bridge Street, Strathaven, ML10 6AN





2 Bedrooms | 1 Public Rooms | 1 Bathrooms

**** CLOSING DATE WEDNESDAY 27TH MARCH @ 1PM**** This beautifully presented 2 bedroomed end terrace villa is an excellent first time buy or may appeal to someone looking to downsize.

The property has been finished to a high standard and features great size gardens that have been well maintained with large driveway and monobloc parking, lawn and timber sun deck.

The accommodation comprises; entrance vestibule that is currently a useful home office area, entrance hallway with staircase to the upper floor level, gorgeous lounge with aspects to front and focal point log burning stove, modern fitted kitchen that has a range of base and wall mounted storage units with worktop surfaces, cloaks/wc with 2-piece suite. On the upper floor there are 2 double bedrooms, both with fitted wardrobes whilst there is a modern fitted family bathroom. Features of the home include gas fired central heating and double glazing.

Early viewing of this lovely home is highly advised in order to fully appreciate the size, style and setting on offer.

Dovecastle Drive is located only minutes away from all local amenities. Strathaven is a desirable market Town located south of East Kilbride and Hamilton. The area offers excellent shopping facilities and sports facilities including swimming baths, bowling clubs, golf courses, public parks and country walks. Strathaven has a typical village community, a wide variety of shops within the area.



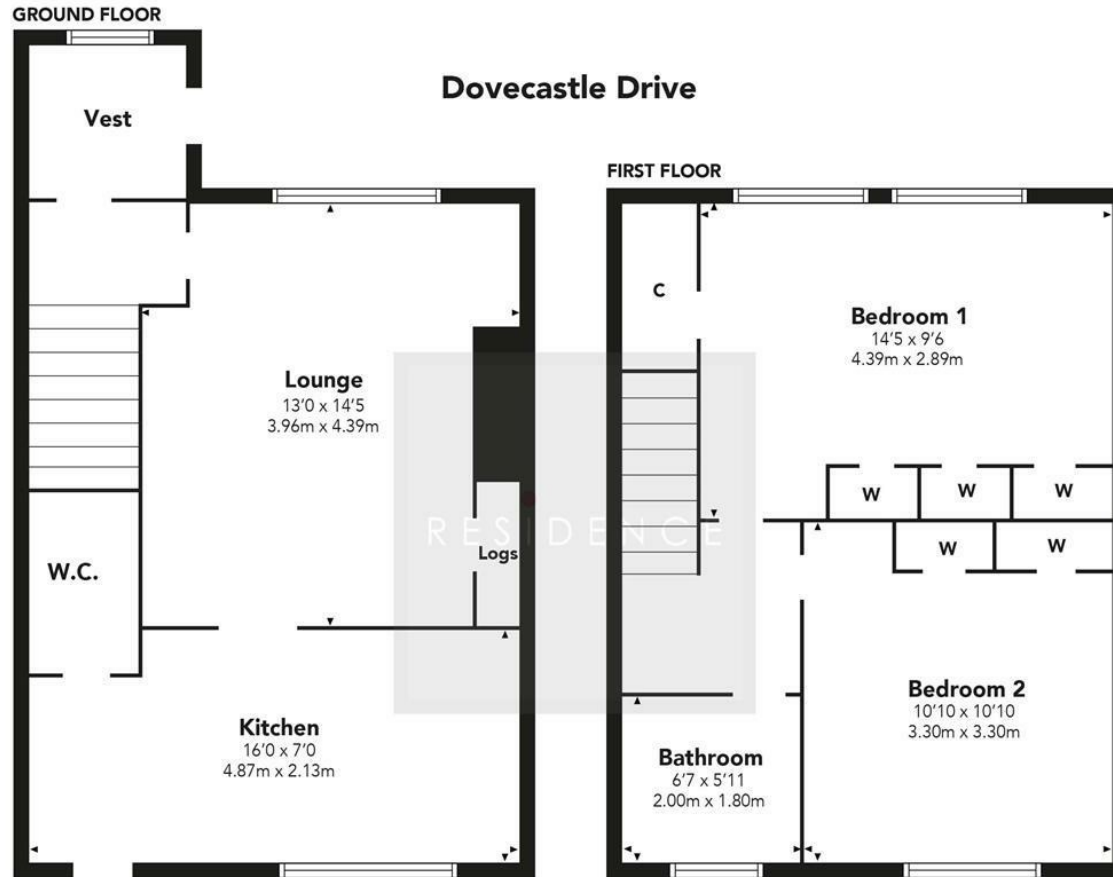
828.00 sq ft | EER = C



RESIDENCE







Floor Plan measurements are approximate and are for illustrative purposes only. While we do not doubt the floor plans accuracy, we make no guarantee, warranty or representation as to the accuracy and completeness of the floor plan. You or your advisors should conduct a careful, independent investigation of the property to determine to your satisfaction as to the suitability of the property for your space requirements.

Produced by Plush Plans Ltd

We believe these details to be accurate; however, they do not form any part of a contract. Fixtures and fittings are not included unless specified in the enclosed. Photographs are for general information and it must not be inferred that any item is included for sale with the property. All distances and measurements are approximate. Floorplans may not be to scale and are for illustration purposes only.