

first for homes

first for property in life - [firstforhomes.co.uk](https://www.firstforhomes.co.uk)

Contact Allan England's Team

01592 752 944



Forth Park Crescent, Kirkcaldy
Price £179,000

Forth Park Crescent, Kirkcaldy

IT'S ALL INCLUDED! MANY EXTRAS COME AS STANDARD!
Exceptional Quality Comes Standard!
Buy your dream home with your own choice of interior

***LAST ONE REMAINING ***

STUNNING ONE BEDROOM GROUND FLOOR APARTMENT WITH GARDEN - READY TO MOVE INTO!
VIEWINGS AVAILABLE ON REQUEST.

EXCLUSIVE DEVELOPMENT - HISTORIC "B" LISTED BUILDING, THE MANSION HOUSE, FORTH PARK RESIDENCES, KIRKCALDY!

PLOT 047/UNIT 1 - (Size 60.4sq.m. Private Garden size approx 94m2)

New Exclusive development by Easy Living Developments offering a range of contemporary, stylish apartments offering historic and characteristic features including bespoke German kitchens with quality Neff appliances, luxurious bathroom / shower room suites with Porcelanosa tiling and an abundance of extras included within the asking price.

Allan England's team at First for Homes are proud to offer for sale this luxurious 1-bed Ground Floor Apartment situated within B Listed "The Mansion House", Forth Park Residences, Kirkcaldy and built by Easy Living Developments - a Fife based multi award winning builder you can trust to build your dream home.

This impressive apartment offers immaculately finished living accommodation comprising stunning open-plan lounge / dining / kitchen with a high specification German kitchen including Neff integrated appliances, a generously proportioned bedroom and luxuriously fitted shower room boasting Porcelanosa tiling. Other special features include secure private entry system, solid wood finishes and state of the art air source heat pump systems. Externally, this apartment offers a private garden area and in addition there are beautifully maintained shared garden grounds, 2 allocated parking spaces per apartment and further visitor parking.

Don't miss out - Call our friendly team for further information on 01592 752944.

* Reservation Fee Applies

PHOTOGRAPHS ARE FOR ILLUSTRATION PURPOSES ONLY
• Contemporary and Stunning One Bedroom Private Apartment

- Open Plan Living, Versatile, Spacious
- High Branded German Kitchen with NEFF Appliances
- Luxury Showerroom
- Solid Wood Finishes Throughout
- Many Extras Included in the Price
- Allocated Car Parking Spaces x 2
- State-of-the-Art Heating System
- Private Garden
- Call for Further Information





EDL - KIRKCALDY

PHOTOGRAPHS (Illustration Purposes Only)

LOCATION / AMENITIES - Kirkcaldy

SECURE PRIVATE ENTRY SYSTEM

ENTRANCE HALL

5'6" x 24'6" approx. (1.70m x 7.49m approx.)

OPEN-PLAN LOUNGE / DINING / KITCHEN

15'5" x 17'5" approx. (4.70m x 5.31m approx.)

BEDROOM

13'5" x 11'3" approx. (4.09m x 3.45m approx.)

SHOWER ROOM

11'3" x 4'9" approx. (3.45m x 1.47m approx.)

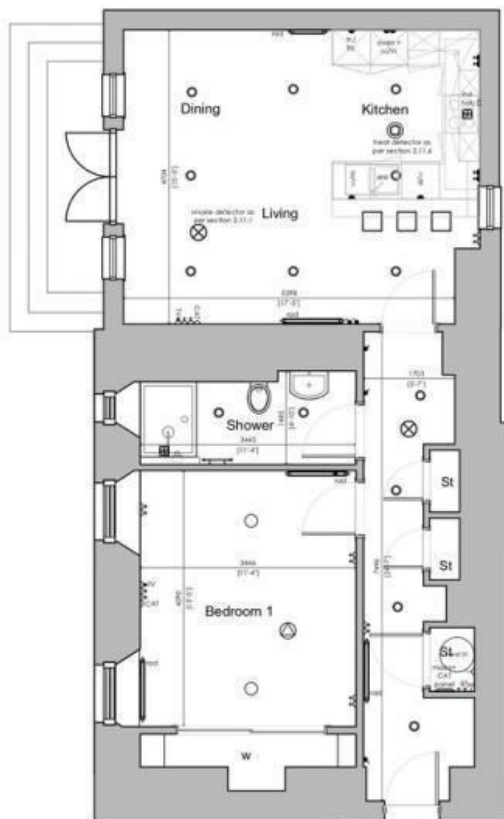
PRIVATE GARDEN

2 ALLOCATED PARKING SPACES

VISITOR PARKING

SHARED GARDEN GROUNDS

INFORMATION



UNIT 1

Unit 1 - Mansion House

Disclaimer: These plans depict a typical layout of the house type. All dimensions and sizes are approximate and subject to change without notice.

NOT TO SCALE at A4



tel 01592 770020
 email info@eld.uk.com
 web www.easylivinghomes.co.uk
 Unit 17, Newark Rd. South,
 Eastfield Ind. Est,
 Glenrothes, Fife, KY7 4NS

Copyright © Easy Living Developments Ltd. 2021. All rights reserved. Any breach of copyright will be pursued.

Information

These particulars are prepared on the basis of information provided by our clients. We have not tested the electrical system or any electrical appliances, nor where applicable, any central heating system. All sizes are recorded by electronic tape measurement to give an indicative, approximate size only. Prospective purchasers should make their own enquiries – no warranty is given or implied. This schedule is not intended to, and does not form any contract.

FREE Valuation

Selling Your Home?

Choose first for homes - a highly experienced estate agency team you can trust to sell your home at the highest possible price. Offering fantastic savings on selling fees, with no compromise on service, free professional photography highlighting your home in its best light, first for homes will be your first choice. Contact us today to arrange your appointment.



first for trust



first for service



first for aftercare

first for homes

first for property in life - firstforhomes.co.uk

Contact Allan England's Team

01592 752 944

32 North Street, Glenrothes, Fife KY7 5NA

Fax: 01592 807947

sales@firstforhomes.co.uk

www.firstforhomes.co.uk